

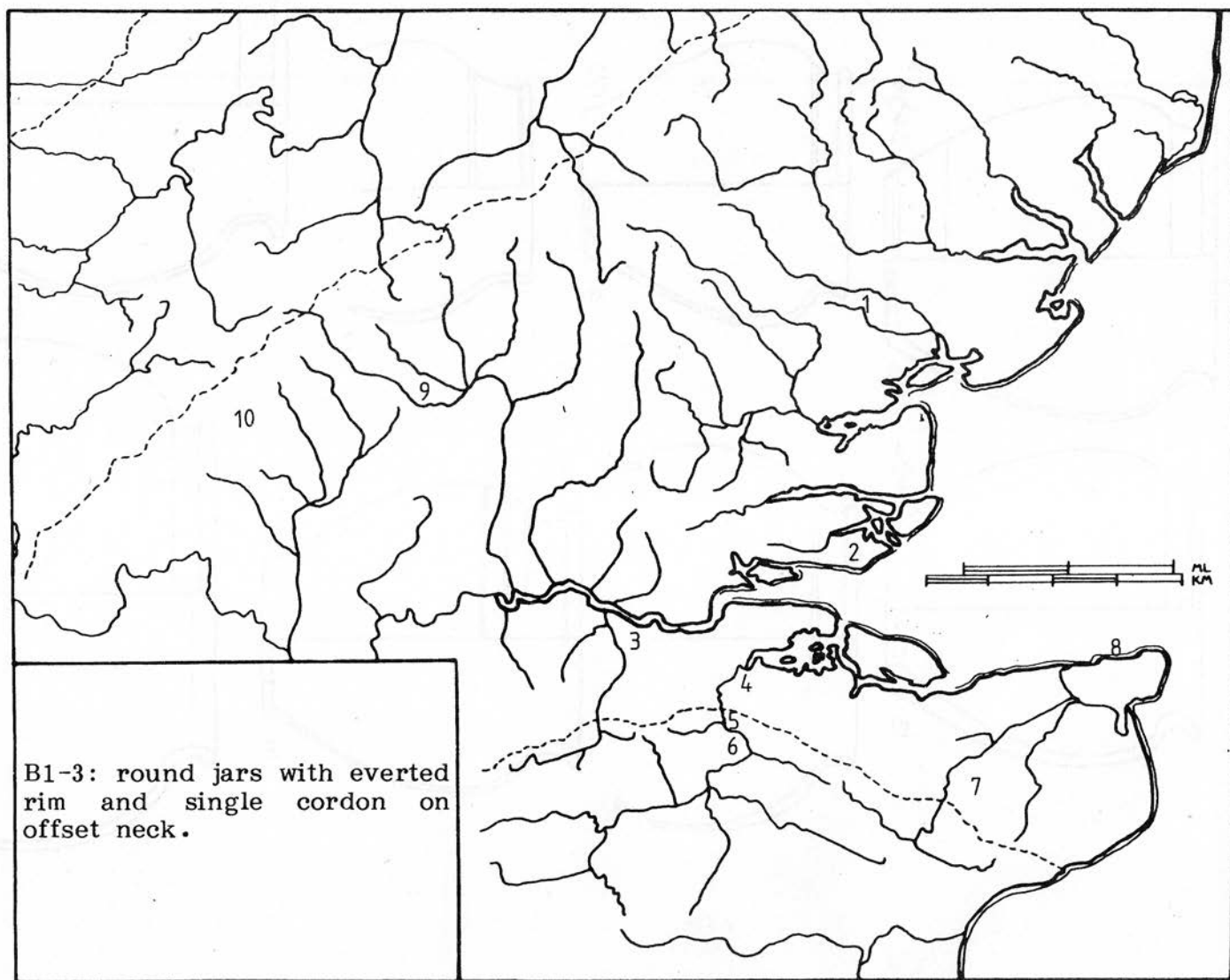
B1-3: ROUND JARS WITH EVERTED RIM AND SINGLE CORDON
ON OFFSET NECK

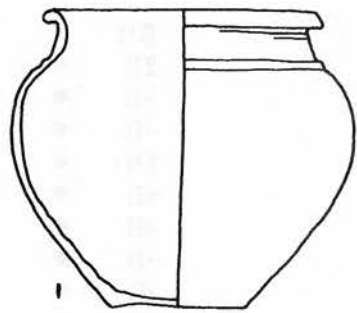
See also D1-1, the more common bowl version.

1	Lexden, group 3 [1069].	RB	△
2	Great Wakering, grave 1 [771].	2B	●
3	Stone, 1941, fig.3 no.3.	-B	●
4	Rochester [62].	-B	●
5	Aylesford, AB 75, with brooch.	1B+	●
	[1363], =AB 76.	-B	●
	[1525], =AB 78.	-B	●
6	Allington, no.5 [194].	-B	●
	no.7 [186].	-B	●
	no.17 [181].	-B	●
7	Swarling, grave 1 [1443], =AB 1, with brooch.	1B+	●
	grave 9 [1404], =AB 19.	1B	●
8	Birchington, Epple Bay [1380].	-B	●
9	Crookhams, 1C.	3S+	●
10	Berkhamstead, Dellfield, burial 2 no.62, with brooch.	1B+	○

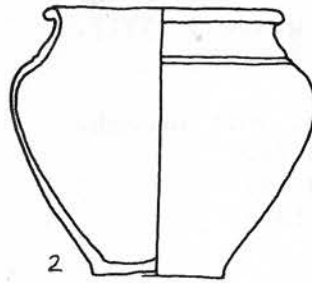
Notes

The form has been recognised largely from cemeteries in Kent; it is less common than the wider-mouthed D1-1 in general. The Birchington pot is typologically later 1st century AD and the Epple Bay cemetery has only post-conquest forms, but this pot is extremely well made, in grog. Lexden and possibly Crookhams (with shallow creases on the neck) are also late examples. Most of the Kent vessels are, however, in contexts that are likely to be late 1st century BC or early 1st century AD. Allington in general is later than Aylesford, and exhibits some individuality in rim shape that is typical of Kent, where upright necks are characteristic.

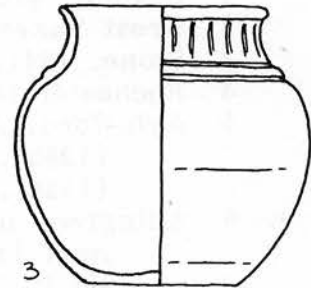




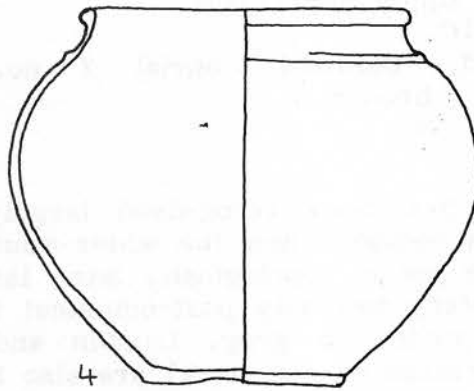
1



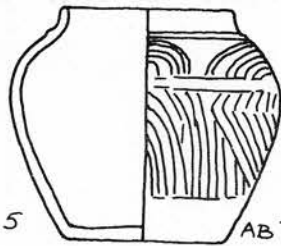
2



3

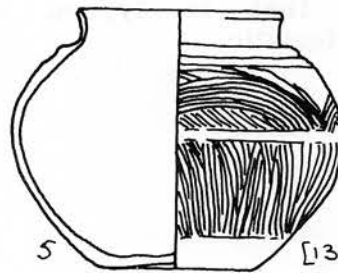


4



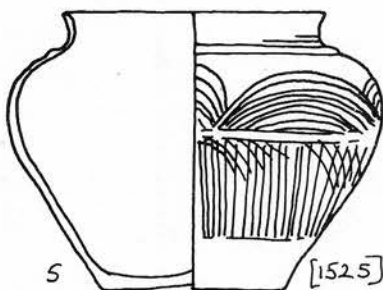
5

AB75



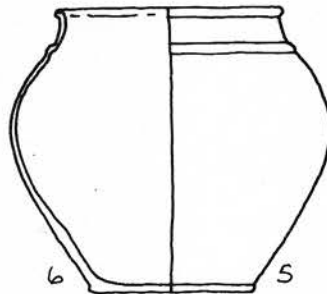
5

[1363]



5

[1525]



6

5



6

7

