

TYPE 3 JARS.

Page 76	CLASS 3A	Narrow necked jars.
Page 79	CLASS 3B	Narrow mouthed, neckless jars.
Page 79	CLASS 3C	Pedestal jars.
Page 79	CLASS 3D	Storage jars.
Page 84	CLASS 3E	Bead rimmed jars.
Page 88	CLASS 3F	Jars with hooked bead rim.
Page 91	CLASS 3G	Facetted jars.
Page 94	CLASS 3H	Everted rim jars.
Page 100	CLASS 3I	Jars in "bowl" style.
Page 103	CLASS 3J	Jars in "cooking pot" style.
Page 108	CLASS 3L	Lid-seated jars.

## TYPE 3 JARS.

CLASS3A Narrow necked jars.  
CLASS3B Narrow mouthed, neckless jars.  
CLASS3C Pedestal jars.  
CLASS3D Storage jars.  
CLASS3E Bead rimmed jars.  
CLASS3F Jars with hooked bead rim.  
CLASS3G Facetted jars.  
CLASS3H Everted rim jars.  
CLASS3I Jars in "bowl" style.  
CLASS3J Jars in "cooking pot" style.  
CLASS3L Lid-seated jars.

### Class 3A Marrow necked jars.

3A1. Squat jars with cordoned shoulders (40-70).

3A1.1 Upchurch S1/lb. BM, Twinney Saltings. 50-70. A pre-invasion belgic form (Thompson B3-5, B2-4.5, Swarling 32). The fabric is Roman. Common.  
3A1.2 Upchurch S1/lb. RP 16, 50-70. Common.  
3A1.3 Upchurch S3/lb. BM 57 4-1-13. 40-60/70. Hume 1954, 83, 2.2. Similar to Thompson B3-4. Swarling 13. Common.  
3A1.4 Cliffe S1/4b. HC. 50-70. Rare.

3A2 Similar to 3A1, but with narrower neck (10/30-50/100).

3A2.1 Cliffe S1/4b. HC. 50-100. Thompson B3-6. Rare.  
3A2.2 Upchurch N1/lb. RP 620. 10/30-50/70. This example is post-conquest however. Vessel is probably an earlier version of 3A1.

3A3 Tall, bulbous vessel with neck cordon (50-220/300+).

3A3.1 Upchurch S1/lb. RT 106. 50-200. Knife trimmed lower parts and has burnished lines around the neck. Common.  
3A3.2 Cooling S1/6. MC.ABH. 170/190-210/230. Osprunge 394 is 160-190. There are late Iron Age antecedents in Thompson B3-8 and B3-9.

3A4 Tall, bulbous vessel without neck cordon (50-200/300+).

3A4.1 Cliffe H1/4h. HC. 50-150. Rare.

3A5 Tall, slender with neck cordon (170/190-230/250). This variant is an extension of variant 1B7.

3A5.1 Cooling S1/6bs, MC.ABH. 170/190-210/230. Vessel is burnished on neck and foot and has a burnished sine wave. Finish is silver-grey. Common.  
3A5.2 Cooling S1/6bs orange and black. MC.ABH. 170/190-210/230. Discoloured where burnished. Cam 281b is dated to 200+. Common.

3A6 Small, globular vessel (40-70).

3A6.1 Upchurch S3/lh. GU. 40-50/70. Similar vessels are known up to the fourth century at Mucking and well into the second at Springhead. Rare.  
3A6.2 Upchurch F2/1. RW 319. 40-50/70. Rare.



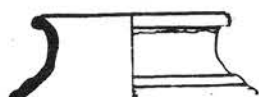
3A1.1



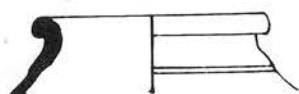
3A1.2



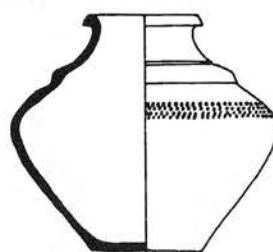
3A1.3



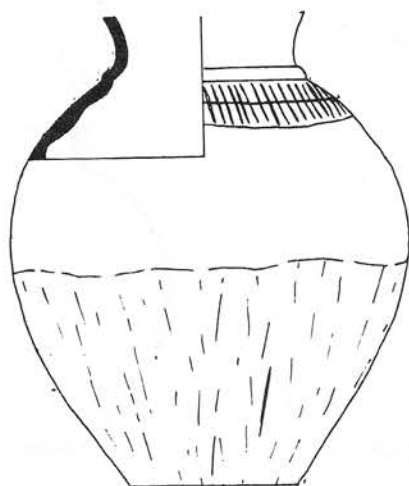
3A1.4



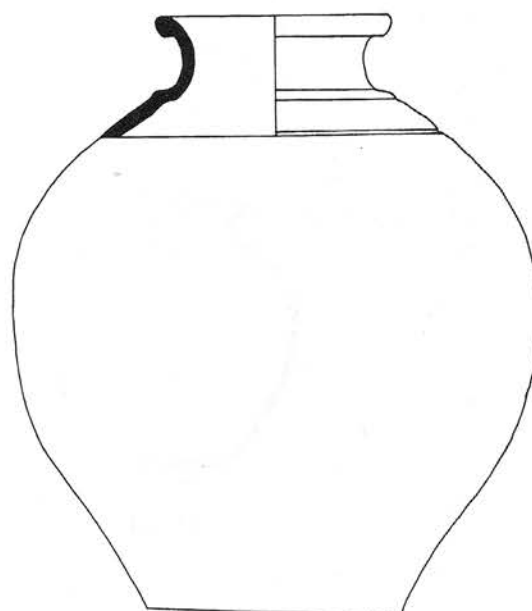
3A2.1



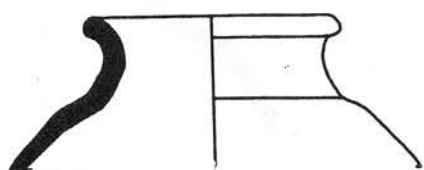
3A2.2



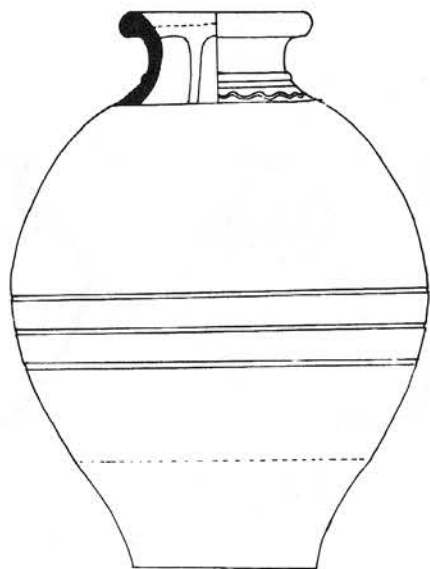
3A3.1



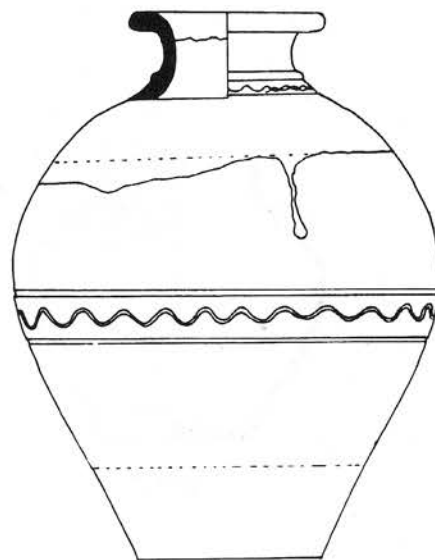
3A3.2



3A4.1



3A5.1



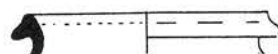
3A5.2



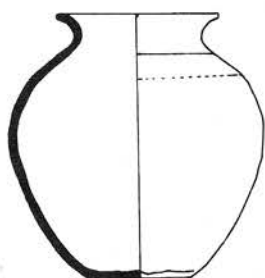
3A6.1



3A6.2



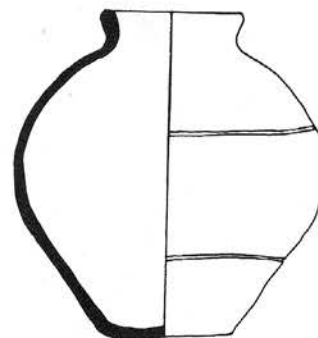
3A0.1



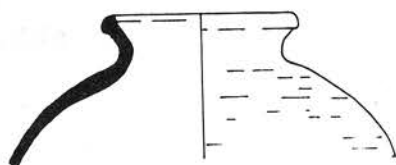
3B1.1



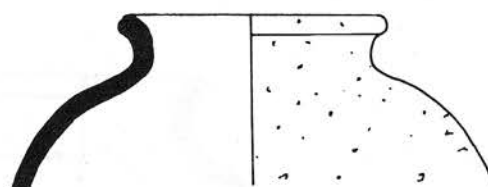
3B1.2



3B2.1



3B3.1



3B3.2

Unclassified.

3A0.1 Cooling S1/lb. MC.JR. 50-220. Unique.

Class 3B Narrow mouthed, neck less jars.

3B1 With flaring rim.

3B1.1 Cooling S1/6b. MC. 50/70-100. Partially handbuilt and only burnished in a narrow band around the shoulder. Rare.

3B1.2 Cooling S1/6 orange. EF. 50/70-100. Rare.

3B2 With upright rim.

3B2.1 Cooling S3/6b orange. MC. 50/70-100. Unique.

3B3 With thickened rim (50/70-100).

3B3.1 Cooling S3/6b. MC.AHI. 50-100. Rare.

3B3.2 Cliffe H2/4. HC. 70-100. Rare.

Class 3C Pedestal jars.

Although certain rim sherds could conceivably be from pedestal jars (Thompson class A) the marked lack of corresponding vessel bases suggests that they were not manufactured in quantity, if at all, during the late belgic period by the industries. As much of the jar and bowl range owes something to the Aylesford-Swarling tradition, a class is left open for possible further inclusion of pedestal jars.

Class 3D Storage jars.

The Thameside shell-tempered storage jar is an 'abundant' vessel class. Each vessel is however highly individual, tending towards the unique. There are at least fifty different known schemes of shoulder decoration (C. Breen pers. com.). The overall style is Romanised native, equivalent to "Patch Grove Ware" (Ward Perkins 1944, 44). The colour varies across some pots from blue-grey to orange-brown. The form is large, wide mouthed and normally has a band of stabbed decoration around the shoulder. Vessels are largely hand-built.

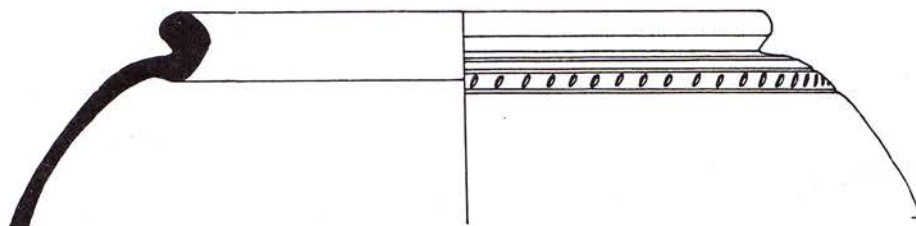
3D1 With everted and rolled rim (40/50-150).

3D1.1-2 Cliffe H1/4h and H1/4hp. HC. 40/50-150. Southwark IIM is known throughout the first and second century. Osprunge 417 is with samian dated 140-190. At New Fresh Wharf, London, the type disappears before the end of the second century. At Gun Hill (Drury and Rodwell 1973, 16, 81-84) vessels in Essex fabrics are thought to be later first century. Cam 407a is third century onwards. One occurs in second century deposits in Rochester (Harrison 1972, 134, 22). Abundant.

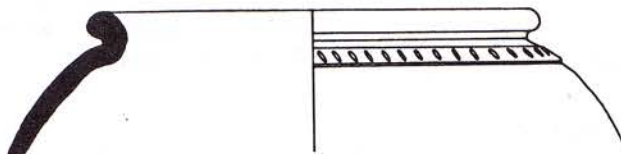
3D1.3-4. Cliffe H1/4h. HC. 40/50-150. Found with early second century samian at Joydens Wood (Tester and Caiger 1954, 123). Common.

3D1.5 Cliffe H1/4h. HC. 40/50-150. Rare.

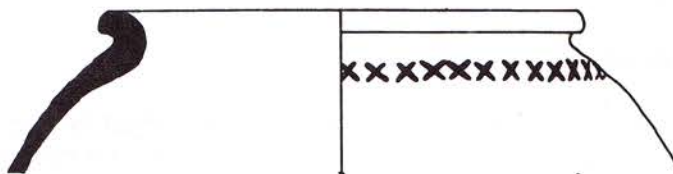
3D1.6-9 Cliffe H1/4h and H1/4hp. 40/50-150. Example 6 is abundant, 7 and 9 are common whilst 8 is rare.



3D1.1



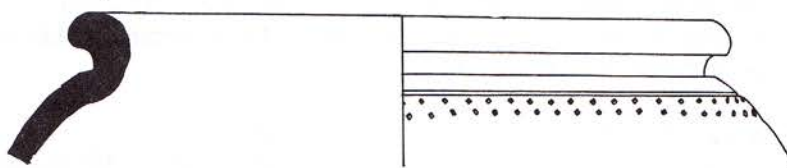
3D1.2



3D1.3



3D1.4



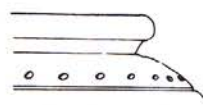
3D1.5



3D1.6



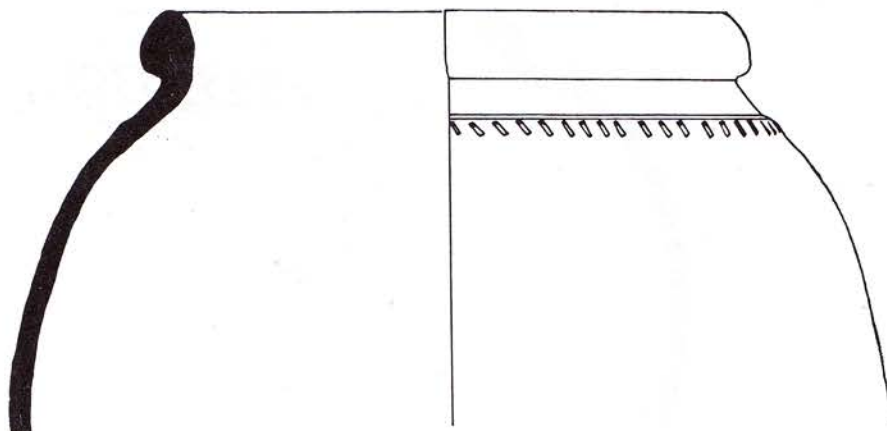
3D1.7



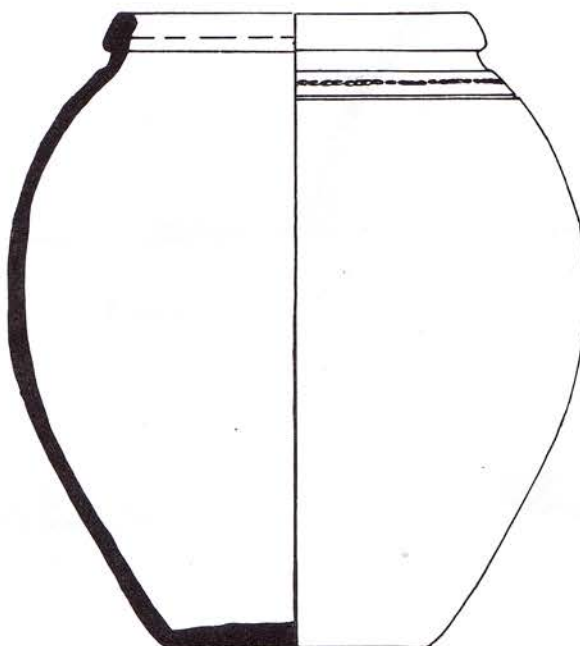
3D1.8



3D1.9



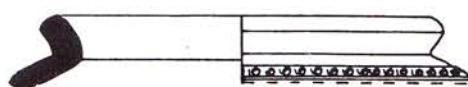
3D2.1



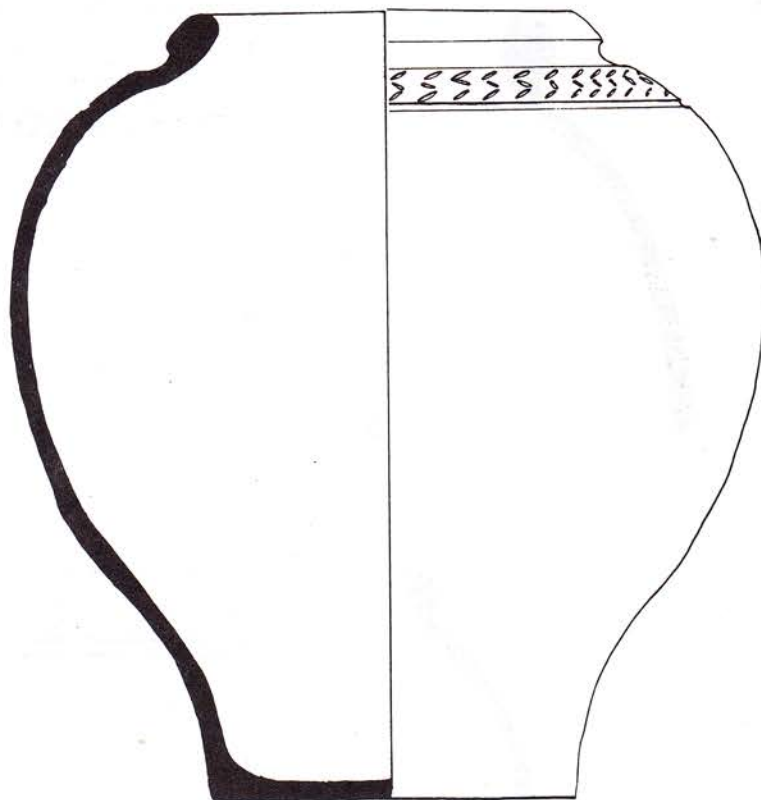
3D2.2



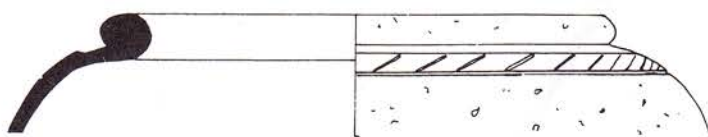
3D3.1



3D3.2



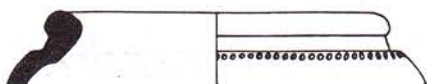
3D4.1



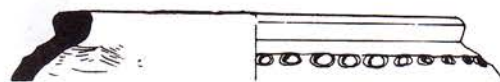
3D4.2



3D4.3



3D4.4

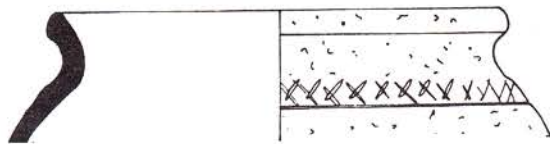


3D4.5

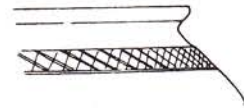


3D4.6

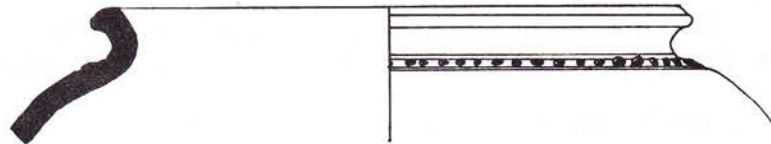




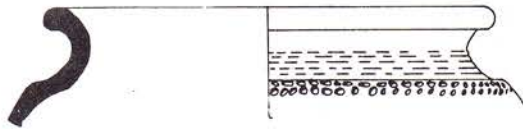
3D5.1



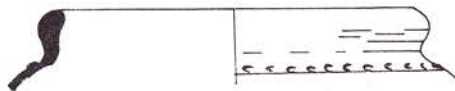
3D5.2



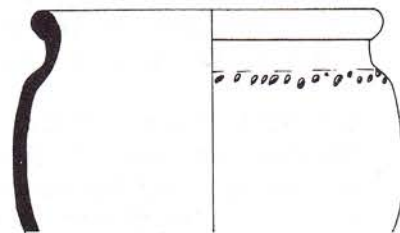
3D5.3



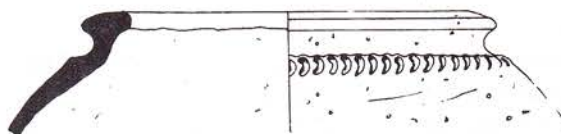
3D5.4



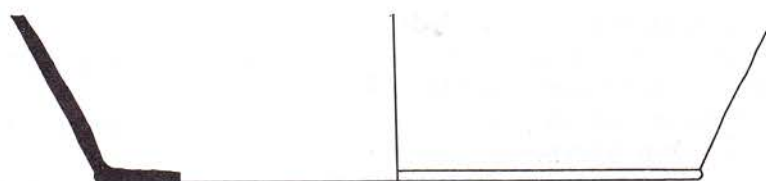
3D6.1



3D7.1



3D0.1



3D0.2

3D2 With rolled rim (40/50-150).

3D2.1 Cliffe G1/4 and S5/4b. PC, 40-150. Note unusual fabrics. Rare.

3D2.2 Cooling S1/6. EF. 60-150. Cam 273 is 60-150. Rare.

3D3 With sharply everted rim (50/100-150).

3D3.1 Cliffe H1/4h. HC. 50/100-150. Occurs in mid-second century at the Custom House London (Tatton-Brown 1974, 163, 182). Compare Thompson C6-1. Rare.

3D3.2 Cliffe H1/4h and S3/lhp. HC. 50-100. Rare.

3D4 With facettèd shoulder, compare class 3G (50-150).

3D4.1 Cooling S1/6. EF. 60-100. A similar form occurs with belgic forms at Bexley (Caiger 1958, 188,2). Rare.

3D4.2-3 Cliffe H1/4h. HC. 50-150. Common.

3D4.4 Upchurch S3/1. JD. 50-100. Rare.

3D4.5 Upchurch G1/1. JD. 40-50/70. Rare.

3D4.6 Upchurch F1/lh. JD. 30-70. Unique.

3D5 With gently everted rim (40/50-100).

This variant has been arbitrarily constructed to embrace many vessels which do not fit into the other categories.

3D5.1-2 Cliffe H1/4h. HC. 50-100. Rare.

3D5.3 Upchurch S3/lh. JS. 50-100. Unique.

3D5.4 Upchurch G1/1. JD. 40-70. Rare.

3D6 With inward-curling thickened rim (170-250).

Several vessels of this variant are known amongst the Broomhey Farm assemblage, but as all sherds tend to break at or just below the rim, the total form is difficult to gauge. 3D6.1 Cooling S1/6. MC.ZX. 170/190-210/230. Rare.

3D7 Relatively tall vessel with upright rolled rim. 3D7.1 Upchurch S1/1. JS. 100-200. Rare.

Unclassified.

3D0.1 Upchurch F1/lh and S3/lh. 40/50-70. The pattern is also known to run in the other direction. Rare.

3D0.2 Cliffe H1/4h. HC. 50-150. Normal wide, relatively thin base for 3D vessels. Common with beaded foot, abundant without.

Class 3E. Bead-rimmed jar.

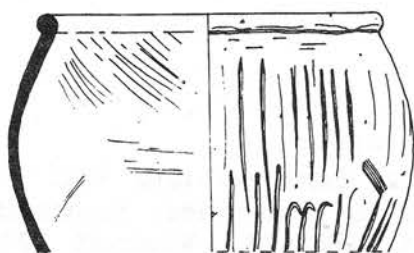
All sub-divisions within this class must be somewhat artificial.

3E1 With simple bead (10-110).

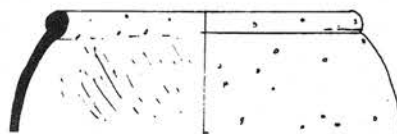
3E1.1 Upchurch F1/lh. JD. 10-100. General style of mid-first century vessels at Canterbury Castle (57,15). Common.

3E1.2 Upchurch F1/lh also F2/lh and S3/6h. JD. 10-100. Abundant. 3E1.3 Upchurch F1/lh. JD. 10-100. Rare.

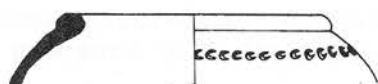
3E1.4 Cliffe H2/4h. HC. 70-110. This form is similar to Thompson C1-1. Common.



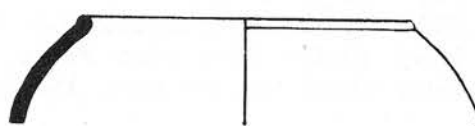
3E1.1



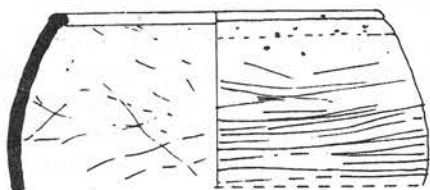
3E1.2



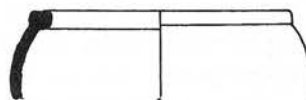
3E1.3



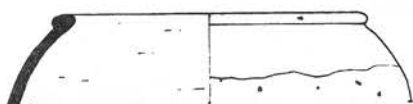
3E1.4



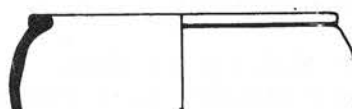
3E2.1



3E2.2



3E3.1



3E3.2



3E4.1



3E4.2

3B2 With internally thickened bead (10-110/140).

3E2.1 Upchurch F1/lh. JD. 10-60/140. Form persists well into second century in sandy fabrics in dwindling quantities. Rochester deposits dated 170-190 (Harrison and Flight 1968, 83). Woodruff 1904, 96, 33. Common.

3E2.2 Cliffe H2/4. 50/70-110/140. Common.

3E3 With externally thickened bead, flat-rimmed (10/40-150/170). 3E3.1 Upchurch F1/lh also S3/lh and S1/1. JD. 10/40-150. Abundant. 3E3.2 Cliffe H2/4 also F2/lh, S1/1. HC. 10/40-150. Thompson Cl-4 is a later first century type. Abundant.

3E4 With out-turned bead (10/40-70).

3E4.1 Upchurch S3/lh. BM, Twinney Saltings. 10/40-70. Common.

3E4.2 Upchurch F1/lh. BM, Slayhills. 10/40-70. Claudian at Richborough (135). Occurs up to early second century at Southwark (IIA). Abundant.

3E5 Bead rimmed with latticed body.

3E5.1 Cliffe S1/4b. HC. 120/130-170/190. There are late Iron Age precedents for this form (Thompson C3-11 and B2-1.5). It is likely to have been made as a mixing of styles in the mid-second century, the fabric and decoration are more suited to class 3J. Richborough 251 is 90-140. Richborough 427 is 90-125. The form occurs with samian dated 75-190 at Dover (239, 750 and 775). Southwark IIA17 is dated 130-180/200. Gillam 118 is 120-160. Rare.

3E6 Squat, round jar with out-turned bead (40/50-100).

3E6.1 Upchurch S3/6b. RW 313. 50/70-100. Burnished on foot and in haphazard bands, Rare.

3E6.2 Upchurch S1/1. MM, Milfordhope SI 1962. 50/70-100. Rare.

3E6.3 Upchurch S3/1b. MK 5 UC 9. 50/70-100. Rare.

3E6.4 Upchurch F1/lh. JD. 40/50-70. Rare.

3E7 With square bead.

3E7.1 Drawing is a reconstruction. Examples occur in S1/4 and S1/1. 30-70. Rare.

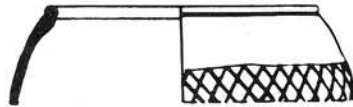
3E8 Bead is above a narrow, pinched neck (50-100).

3E8.1 Upchurch S1/lh. JD. 50/70-100. Rare.

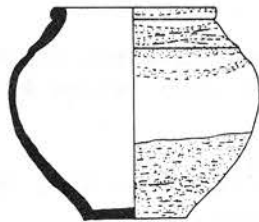
3E8.2 Cooling S3/6 orange. MC.AJK. 50-70. Common.

Unclassified.

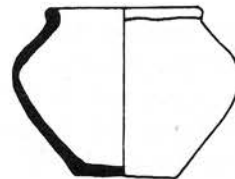
3E0.1 Upchurch S1/1b and S1/6. JD, 50/70-150. This vessel could conceivably belong to the elusive class 3C.



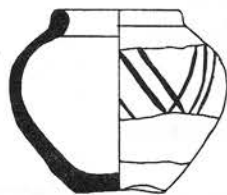
3E5.1



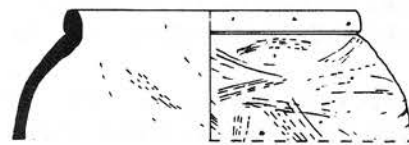
3E6.1



3E6.2



3E6.3



3E6.4



3E7.1



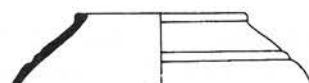
3E7.2



3E8.1



3E8.2



3E0.1

Class 3F Jars with hooked bead rims.

This class is an extension of class 3E. The bead rim has been turned outward into more of a hook shape. There is a great deal of overlap between the two classes.

3F1 With hooked bead rim (40-150/170).

3F1.1 Cliffe H1/4h. HC. 40-150/170. A pre-invasion style (Thompson Cl-4). Current from the later first century but ends before AD 200. See comments in West Kent, 63. Common.

3F1.2 Cliffe H2/4. HC. 40-150/170. Common.

3F1.3 Cooling S1/6. EF. 70-170. Compare Thompson Cl-1. Rare.

3F1.4 Cliffe H1/4h. HC. 50-150/170. Common.

3F2 With high shoulders and hooked bead (40-150/170).

3F2.1 Cliffe S1/4. HC. 50-90. Common.

3F2.2 Cooling S1/6 orange. MC. 50-90. Base holed. Common.

3F2.3 Cooling S1/6 orange. MC. 50-90. Common.

3F2.4 Upchurch S1/1. JD. 70-150/170. Abundant.

3F3 With flattened hook (40-150/170).

3F3.1 Cliffe H2/4 and S1/4. 70-150/170. Common.

3F3.2 Cliffe H2/4. HC. 70-120. Rare.

3F3.3 Cliffe H1/4h. HC. 50-150. Occurs in pre-140 deposits at Springhead. Common.

3F3.4 Cooling H1/6h orange. MC.AHI. 43/50-70/90. Base is spalled and three holes have been made in the base. Parallels in mid-first century deposits, Thompson Cl-1 and West Kent 157-60. Rare (both form and fabric).

3F4 Bead has been pinched to a point (70-150).

3F4.1 Cliffe S1/4. HC. 70-140. Rare.

3F4.2 Cliffe H2/4. PC. 70-140. Rare.

3F4.3 Upchurch 11/1. RW 234. 70-140. Rare.

3F4.4. Cliffe H1/4h. PC. 70/80-140/150. In deposit dated 80-140 (West Kent 158). Common.

3F5 With internally thickened hook (50/70-110/120).

3F5.1 Upchurch S3/lb. RW 277. 50/70-110/120. Rare.

3F5.2 Cliffe S1/4. HC. 50/70-110/120. Rare.

3F6 with very short, slightly defined neck.

3F6.1 Cliffe H1/4h. HC. 50-150. Rare.

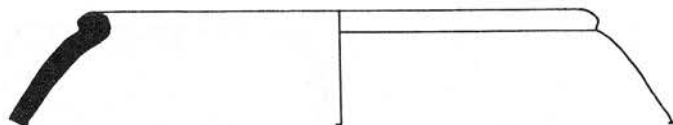
3F7 Where the hook turns cleanly out from the body.

3F7.1 Reconstruction. Cooling S1/6. MC. 50-170. Rare.

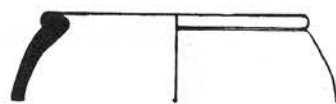
3F8 With the hook squared off as it leaves the body.

3F8.1 Cliffe H2/4, HC. 50/70-110/120. A late first century style with internal thickening, Thompson Cl-4, In late first and early second century deposits (West Kent 74 and 200), Rare.

3F9 With a square-ended, sharply everted hook. 3F9.1 Cooling S1/6. MC. 50-110/170. Rare.



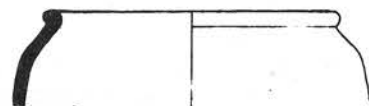
3F1.1



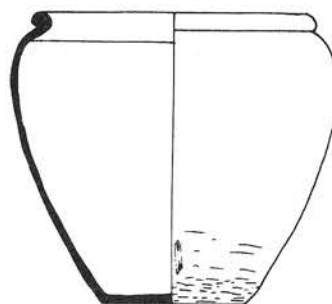
3F1.2



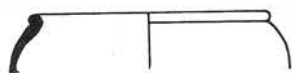
3F1.3



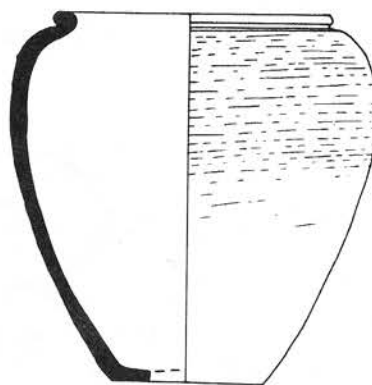
3F1.4



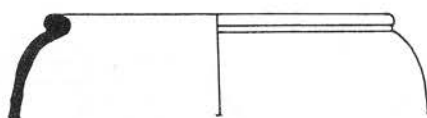
3F2.2



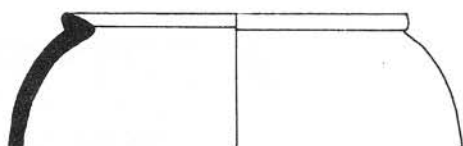
3F2.1



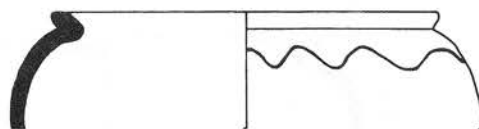
3F2.3



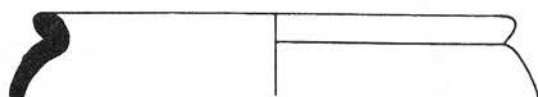
3F2.4



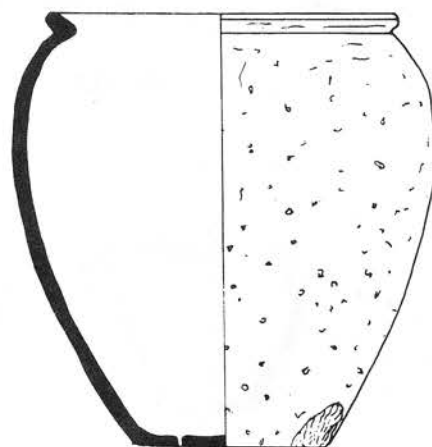
3F3.1



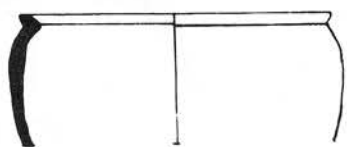
3F3.2



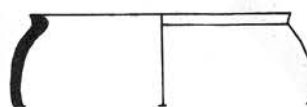
3F3.3



3F3.4



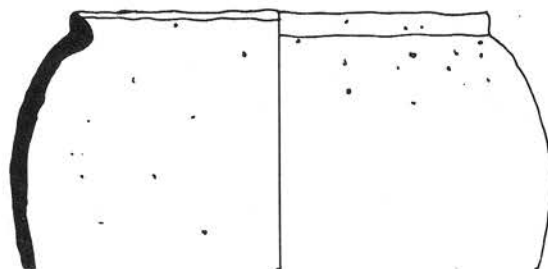
3F4.1



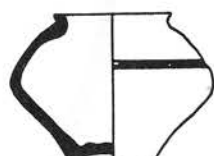
3F4.2



3F4.3



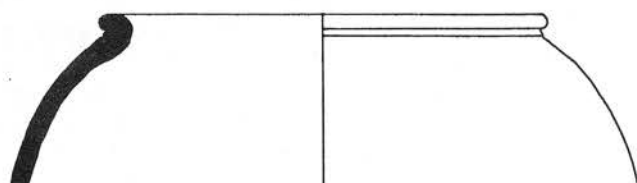
3F4.4



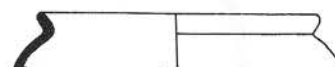
3F5.1



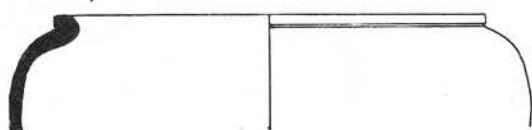
3F5.2



3F6.1



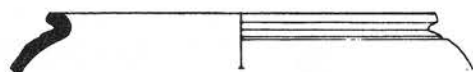
3F7.1



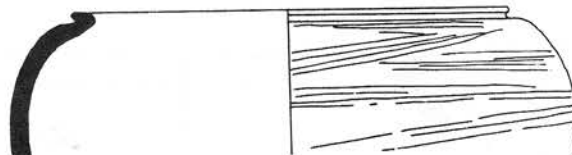
3F8.1



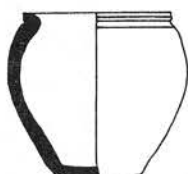
3F9.1



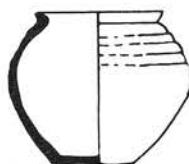
3F10.1



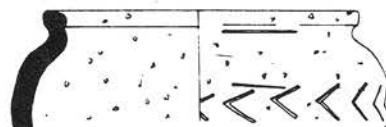
3F11.1



3F0.1



3F0.2



3F0.3



3F10 With rilling on the shoulder (compare 3Gb),  
3F10.1 Cliffe S1/4 and S1/4b. HC. 70-150/170. Common.

3F11 With squashed rim,  
3F11.1 Cooling S3/6h orange. MC.TC. 50/70-100. The combing is characteristic of Cooling. Rare.

Unclassified.

3F0.1 Cliffe S1/4b. PC. 70-150. Unique.  
3F0.2 Upchurch S3/1b. MK 5 UC 10. 40-70. Unique.  
3F0.3 Cooling H2/6h. MC.AFJ. 50-100. Unique.

Class 3G Facetted jars.

The vessel is peculiar to the region and a typical product of the trans-conquest and early post-conquest years. The facet below the rim appears to have been produced by running the thumb around the vessel as the rim was formed. It often has a sheen giving the incorrect impression that it has been burnished.

3G1 With bead rim.

Parallels for 3G1 put the whole variant in the bracket 40/50 to 100/110. It is not certain whether it pre-dates the conquest. It is late first century at Richborough (135 and 136). Southwark IIA is pre-Flavian to the end of the first century. One vessel is known from a late first to early second century deposit from Vest Kent (160). A 3G was found in belgic deposits at Canterbury Castle (63, 110), but Thompsons type C4 is mainly post-conquest.

3G1.1 Upchurch S3/1h. RV 204. 40-70. Base spalled, lower parts are knife-trimmed. Abundant.

3G1.2 Upchurch S3/1h. RV 211. 40-70. Base spalled. Common.

3G1.3 Cliffe H2/4. HC. 70-100. Rare.

3G1.4 Upchurch F2/1 also S3/1h and S1/1. FS. 40-70. Abundant.

3G1.5 Cliffe H1/4h also S3/1. HC. 50-70/100. Common.

3G1.6 Upchurch F2/1 also S3/1h, S1/1, FS. 40-70. Abundant.

3G1.7 Upchurch S1/1. JS. 50/60-90/110. Rare.

3G1.8 Upchurch S1/1h ? DF. 90-120. Rare.

3G1.9 Upchurch S1/1 and S3/1. JS. 50/60-90/110. This vessel was analysed as UA34 (Monaghan 1982b). Abundant.

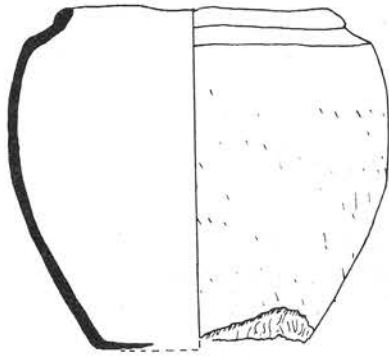
3G2 Crude form without bead rim.

3G2.1 Upchurch F1/1h also F2/1 and S3/1h. JD. 30-50/70. The vessel is vividly slashed; examples from Canterbury Castle in a similar style tend to be late Iron Age (57, 15-17). Rare.

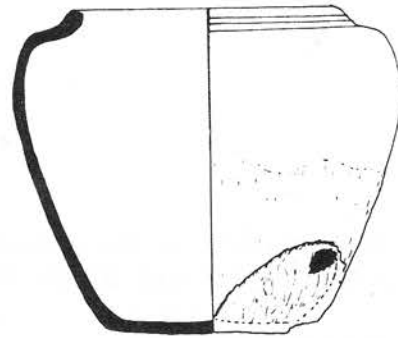
3G3 With a more subtle facet.

3G3.2 Upchurch F2/1 and S1/1. BM 57 4-1 14. Base is broken off. Vessel comes from a Milfordhope waster pit. Hume dated it to 50-70 (1954, 83.1). Diagonal and vertical combing is a typical Upchurch feature. Common. 3G3.3 Cooling S3/6 orange. MC. 50-70. Common. With characteristic "Cooling" combing.

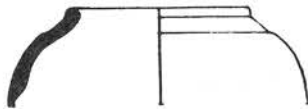
3G3.4 Cooling S3/6 orange and S2/1. MC. 50-70. Common.



3G1.1



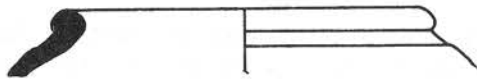
3G1.2



3G1.3



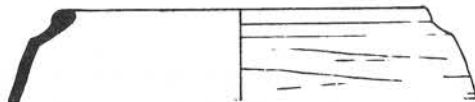
3G1.4



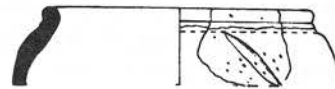
3G1.5



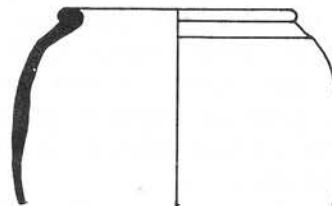
3G1.6



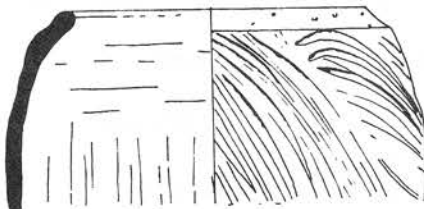
3G1.7



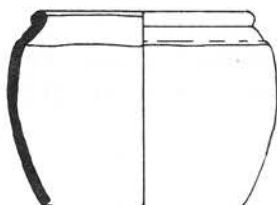
3G1.8



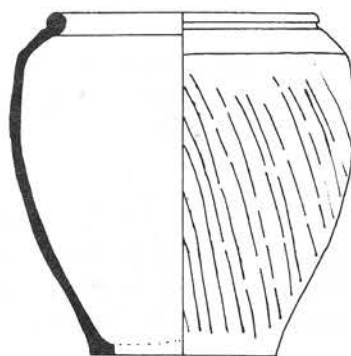
3G1.9



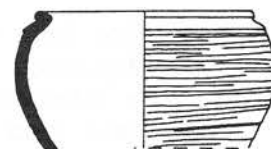
3G2.1



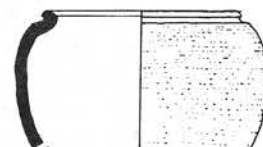
3G3.1



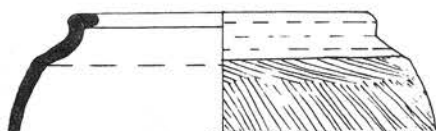
3G3.2



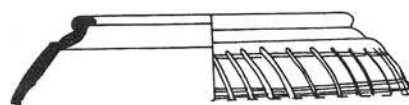
3G3.3



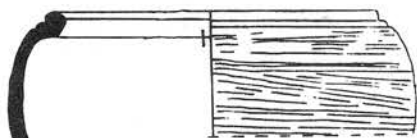
3G3.4



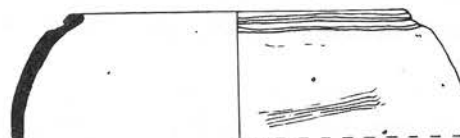
3G4.1



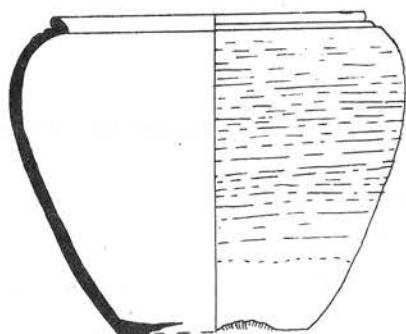
3G4.2



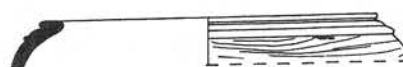
3G5.1



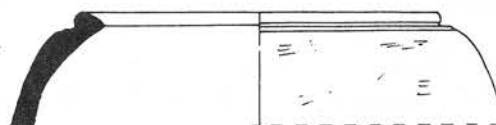
3G5.2



3G5.3



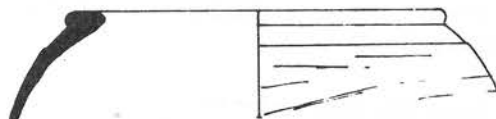
3G5.4



3G5.5



3G6.1



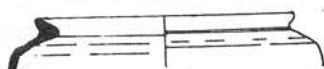
3G7.1



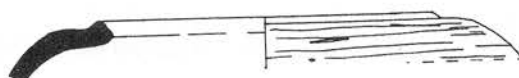
3G6.2



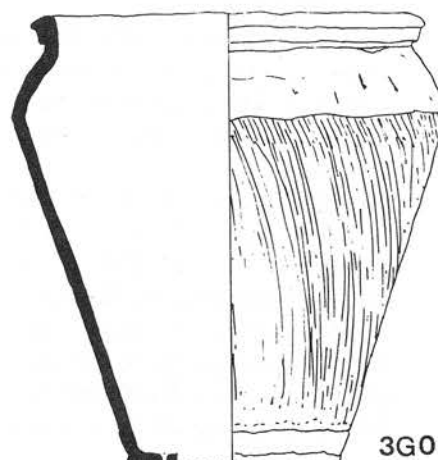
3G0.1



3G0.2



3G0.3



3G0.4

3G4 With exaggerated facet and internal thickening (40-70).

3G4.1 Upchurch F1/1h. JD. 40-70. Rare.

3G4.2 Upchurch S3/1. JD. 50-70. Rare.

3G5 With double facet.

This variant normally has horizontal combing.

3G5.1 Cooling H2/6. MC.PM. 50-70 Common.

3G5.2 Cliffe H1/4h. JD. 50-70, Rare.

3G5.3 Cooling H2/6. MC. 50-70. Common.

3G5.4 Cooling S3/6h. MC. 50-70. Rare.

3G5.5 Cooling S3/6h. MC.AGM. 50-70. Common.

3G6 With law, bowl-like body and a sharp carination below the facet.

3G6.1 Upchurch S3/1h. JS. 40/50-70, Rare,

3G6.2 Upchurch S1/1h and S3/1h. JS. 40/50-70. Common.

3G7 With flattened rim.

3G7.1 Upchurch S1/1. JS. 70-90. Rare.

Unclassified.

3G0.1 Cliffe H2/4. HC. 10/40-60/70. Compare Canterbury Defences 132.5, Unique.

3G0.2 Upchurch S1/1b. JS. 10-70. Unique.

3G0.3 Cooling. S3/6h. MC.AGM. 50-70. Unique.

3G0.4 Upchurch F1/1h also F2/1. JD. 10-70. Many forms similar to this are known, all are "unique", but early variations on the tall 3G style are "common".

Class 3H Everted-rim jars.

This is the commonest type of Romano-British "grey ware" jar, most industries produced an equivalent form which damped down local traditions and was omnipresent during the second, third and fourth centuries. A good example of this outside Kent is Cam. 267 at Colchester. Thompson finds evidence for the form from the conquest onwards (B1-2). At Mucking it is seen as following the demise of early 3L vessels. In north Kent it was the successor of 3G and gradually replaced both 3E and 3F. Many of the variants below are simple variations on each other.

3H1 With cavetto rim, smoothly curving outwards (100-250/300+).

3H1.1 Upchurch S1/1, RW 326. 100-250, Ospringe 218 is dated 190-260. Cam. 266a is thought to have mid-first century origins. Vessel has an uneven rim and a punctured base. Abundant.

3H1.2 Upchurch S1/1. BM 57 4-1-5. 100-250. Ospringe 554 is dated 190-210. Abundant.

3H1.3 Cooling S1/6. MC.ABH. 170/190-210/230. Discoloured. Abundant.

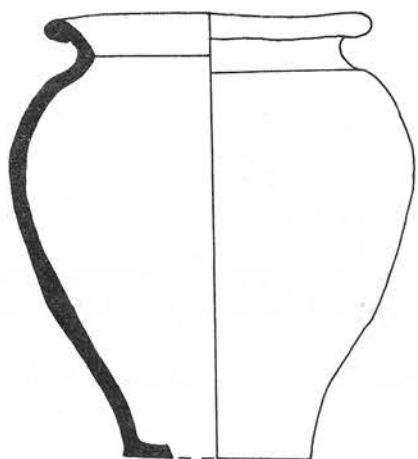
3H1.4 Upchurch S1/1. BM 57 4-1-2. 100-250/300. Ospringe 520 is dated 150-190. Gillam 159 is 290-350. Abundant.

3H1.5 Upchurch S1/1. BM 57 4-1-4. 100-200. A similar vessel was found in a mid-second century deposit at West Tenter St. Abundant.

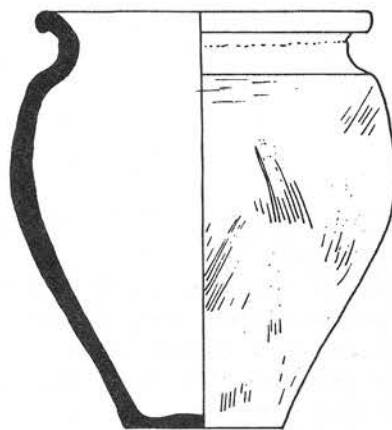
3H1.6 Cooling S1/6. MC.HC. 170/190-210/230. Abundant.

3H1.7 Cooling S1/6 orange. MC.ABH. 170/190-210/230, Abundant.

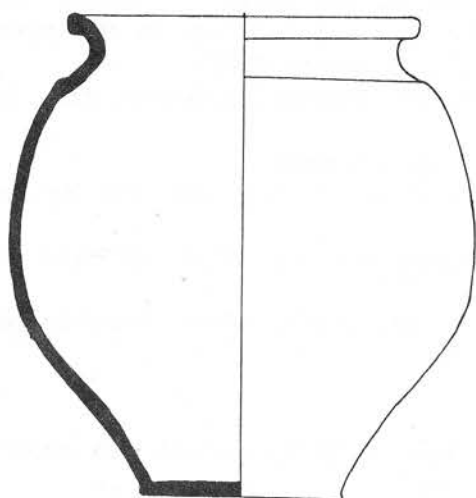
3H1.8 Cooling S1/6 orange. MC.ABH. 170/190-210/230. Blistered. Abundant.



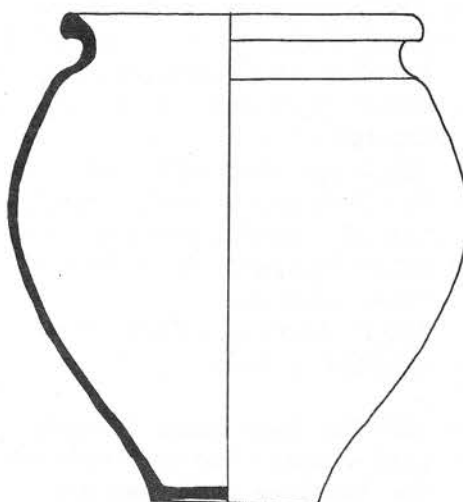
3H1.1



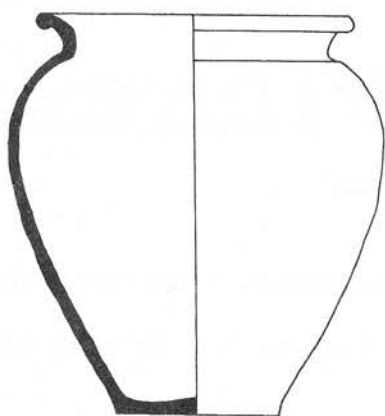
3H1.2



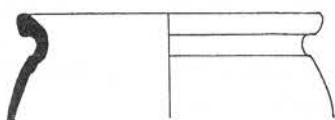
3H1.3



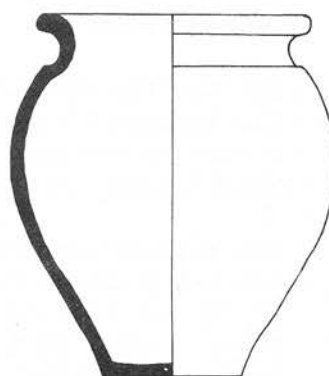
3H1.4



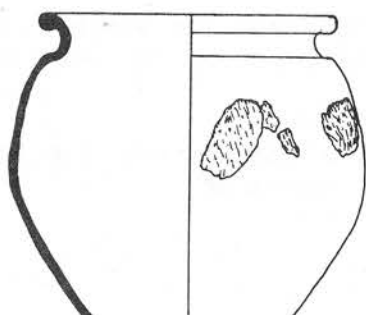
3H1.5



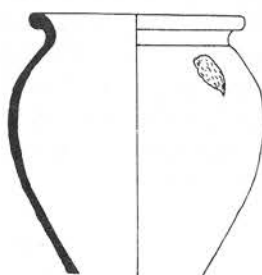
3H1.6



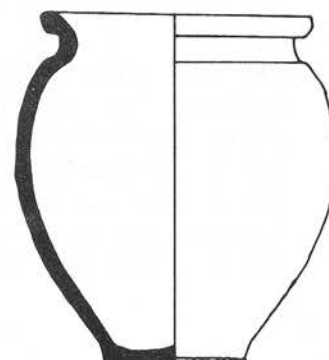
3H1.7



3H1.8



3H1.9



3H1.10

3H1.9 Cooling Sl/6 orange. MC.ABH. 170/190-210/230. Base punctured. Abundant.

3H1.10 Cooling Sl/6 orange. MC. 170/190-210/230. A similar vessel at Sewingshields was dated to the late second and early third centuries (Haigh and Savage 1984, 23, 13).

In general, 3H1 does not seem very numerous before 130/150 and then had a long life.

3H2 The neck is upright, rather than curved (150-250/300+).

The difference between 3H1 and 3H2 may be more apparent than real.

3H2.1 Upchurch Sl/1. RP 13. 150-230. Bulged and slightly cracked. Common.

3H2.2 Upchurch Sl/1. BM 57 4-1-6. 160-230. Twisted rim. In deposits dated 200-225 at Faversham (248) and 155-200 at Dover (609).

3H2.3 Upchurch Sl/1. RT 108. 150-230. Waster, cracked and twisted. Common.

3H2.4 Upchurch Sl/1. BM 57 4-1-1. 160-230. Common.

3H2.5 Upchurch Sl/1 brown. RW 297. Base holed. Ospringe 106 is dated to the mid second century. Common.

3H2.6 Upchurch Sl/1 and S3/1. MM, Stangate Creek 1959. 150-230. Hole in base. Common,

3H2.7 Cooling Sl/6 orange. MC.ABH. 170/190-210/230. Discoloured and ■ dimpled. Common.

3H3 The neck leans inwards.

This unusual variant appears to be a hybrid of 3G and 3H, but need not be the 'missing link' between the two forms.

3H3.1 Upchurch Sl/1. JS. 50/70-100. Analysed as UA23 (Monaghan 1982b). A similar transitional form in Canterbury Ware was found in a deposit of 50-70 (Bennet et. al. 1980, 286, 98). Dover 846 is dated to the second century. Rare.

3H4 The rim is rolled to produce a heavy overhang (170-250/300+).

The variant is more noticeable in sherds than in complete vessels where it can be confused with 3H1.

3H4.1 Cooling Sl/6. MC. 170/190-210/230. Common.

3H5 With bifivid rim (150/170-300+).

3H5.1-2 Cliffe Sl/4. HC. 150-300. Chalk villa examples dated to AD 300 (8, 21, 25 and 27). Rare.

3H5.3 Cooling Sl/6. MC.NK. 170/190-210/230. This variant is most common in the early third century. Rare.

3H6 The rim has only a slight beading (170-250).

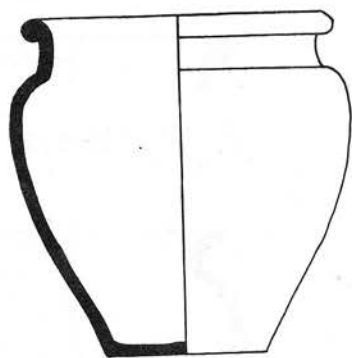
3H6.1 Cooling Sl/6. MC.NK. 170/190-210/230. Rare.

3H7 The neck curves gently away from the body and the shoulder is ill defined. The rim is often slightly overhanging. It is the most common early third century variant. (170-250/300).

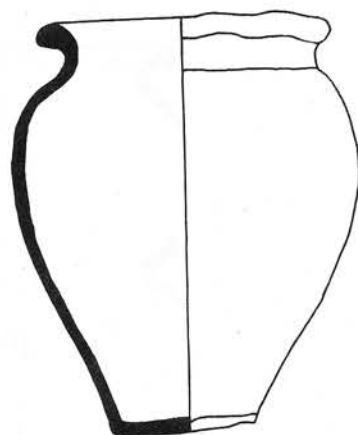
3H7.1 Cooling Sl/6. MC 19. 170/190-210/230. Abundant.

3H7.2 Upchurch S3/1 and S5/1b. BM 56 7-1 5119. 100/150-200. The form is common, but it is very unusual for a 3H to be burnished.

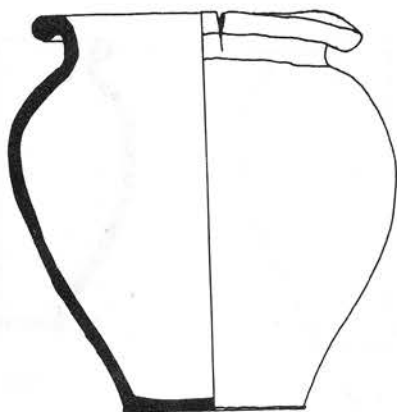
3H7.3 Cliffe Sl/4 PC. 150-250. Rare.



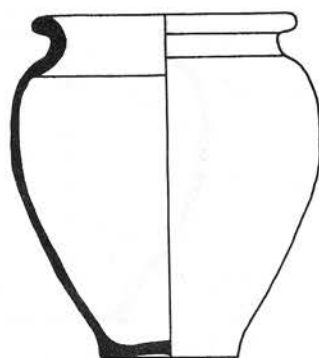
3H2.1



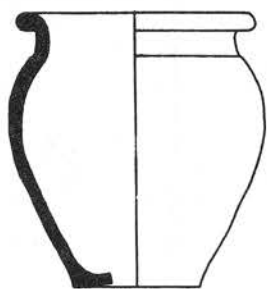
3H2.2



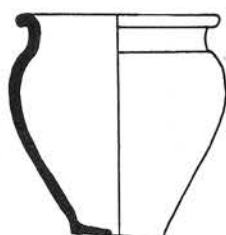
3H2.3



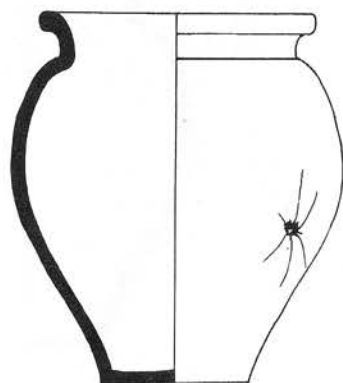
3H2.4



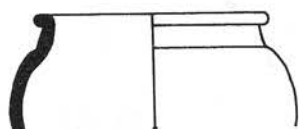
3H2.5



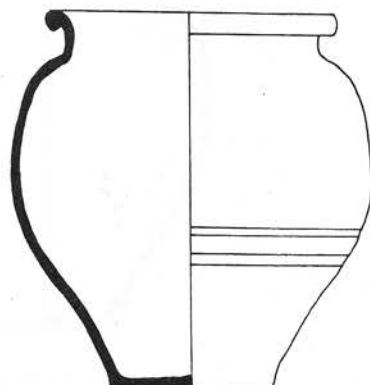
3H2.6



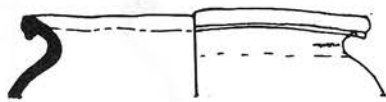
3H2.7



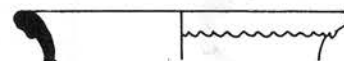
3H3.1



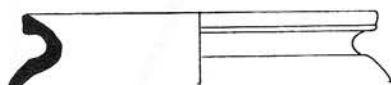
3H4.1



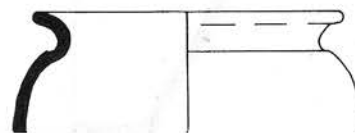
3H5.1



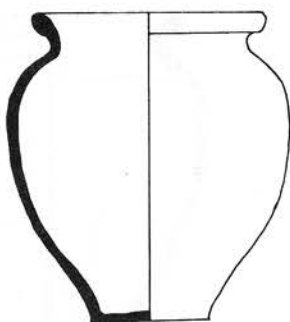
3H5.2



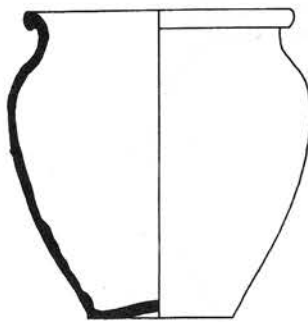
3H5.3



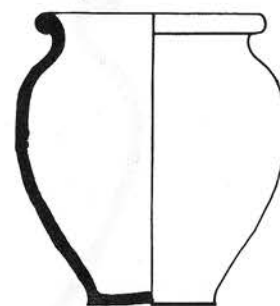
3H6.1



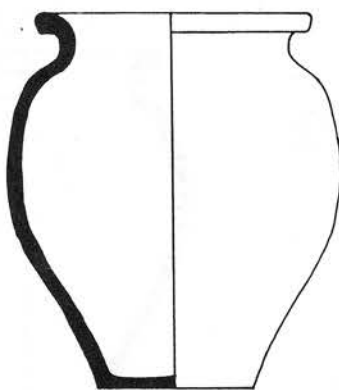
3H7.1



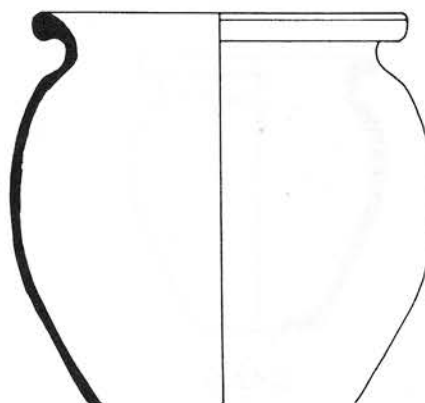
3H7.2



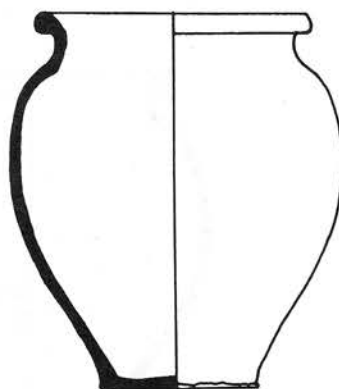
3H7.3



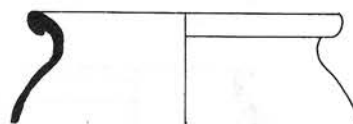
3H7.4



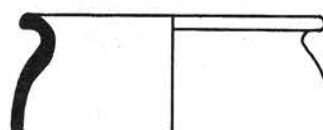
3H7.5



3H7.6

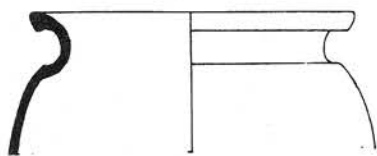


3H7.7

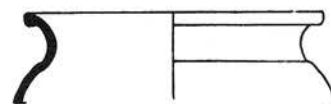


3H7.8

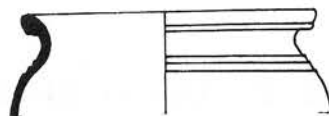




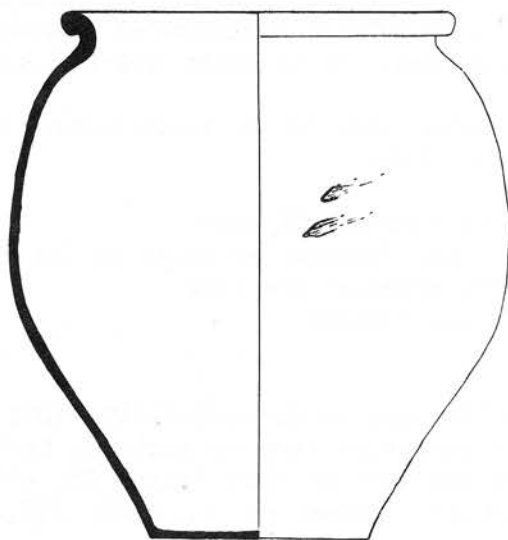
3H8.1



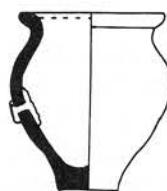
3H8.2



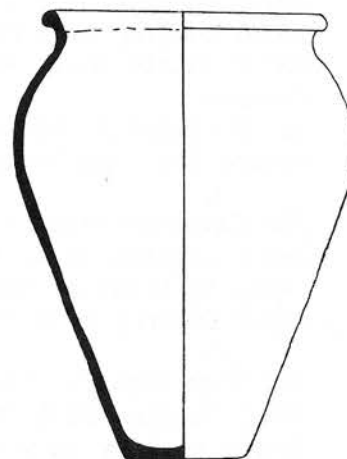
3H9.1



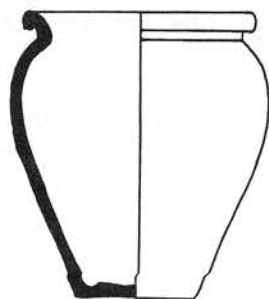
3H0.1



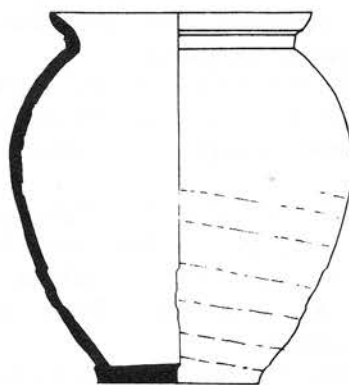
3H0.2



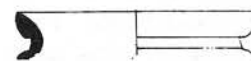
3H0.3



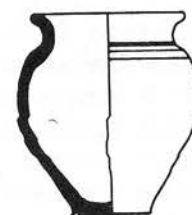
3H0.4



3H0.5



3H0.10



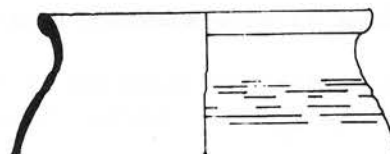
3H0.6



3H0.7



3H0.8



3H0.9

3H7.4 Cooling Sl/6. MC 23. 170/190-210/230. Blistered and discoloured. Abundant.  
 3H7.5 Cooling Sl/6 orange. MC.ABH. 170/190-210/230. Discoloured. Common. 3H7.6  
 Cooling Sl/6 orange. MC.ADB. 170/190-210/230. Discoloured. Abundant.  
 3H7.7 Cliffe Sl/4. HC. 180-250. At Faversham it is dated 200-225 (251). Common,  
 3H7.8 Cliffe Hl/4h. HC. 70-200. This vessel may be an anachronism, built before the  
 type became generally popular. Rare.

3H8 Cavetto-rimmed with an undercut and squared off bead.

3H8.1 Cooling Sl/6. MC.UF. 170/190-210/230. Common, although as the form  
 tends to break at the shoulder, complete examples are rare.

3H8.2 Cooling Sl/6. MC.PH. 170/190-210/230. Common.

3H9 With heavily rilled shoulders.

3H9.1 Cooling Sl/6. MC.ACX. 170-300+. The type is predominantly third and fourth  
 century in Essex and therefore generally rare on northern Kentish sites. There is a  
 late second century parallel at West Tenter St. whilst one is known in a deposit dated  
 160-250 (Bennet et. al. 1980, 125, 2). Rare.

Unclassified.

The form served as a model for a great deal of the local non specialist production.  
 The more aberrant 3H0 examples tend to be earlier than the bulk of the more standard  
 variants.

3H0.1 Cooling Sl/6. MC. 170/190-210/230. Rare.

3H0.2 Upchurch Sl/1. BM 56 7-1 5120. 70-150. Has a lead repair. Unique.

3H0.3 Cliffe Gl/4h red-orange. HC, Wharf Farm. 40-70. A grave  
 urn. Thompson B4-2. Unique.

3H0.4 Upchurch S3/1. RW 191. 150-230. Unique.

3H0.5 Shorne Sl/5. MA. 150-250. Cinerary urn. Unique.

3H0.6 Upchurch Sl/1. RW 266. 70-150. Unique.

3H0.7 Shorne Sl/5b. MA. 150-250. Rare, although similar jar-cum-bowl forms are  
 relatively common.

3H0.8 Upchurch Sl/1. GS. 70-200. as 3H0.7. Rare.

3H0.9 Upchurch Sl/1. JS. 100-300. Possibly related to 3H9. Unique.

3H0.10. Cooling Sl/6. MC.GR. 100-230. Unique.

Class 31 Wide mouthed, everted-rim jars.

This class is composed of those vessels which fall just on the "jar" side of the  
 jar-bowl border. Class 4F is the reciprocal bowl class.

311 With simple out-turned rim (10-70).

311.1 Cooling S3/6. MC.ACJ. 10/40-70. Common.

311.2 Cooling S3/6h. MC.RN. 10/20-70. Common.

311.3 Cooling S3/6hb. MC.AAK. 10/40-70. Common.

312 With a more cursive rim (10-70).

312.1 Upchurch F2/1. RP9. 40/50-70. Rare.

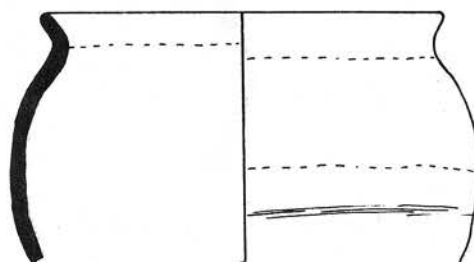
312.2 Cliffe Sl/4h. HC. 50/70-100. Rare.

312.3 Upchurch Gl/lp. JS. 10-40/50. Rare.

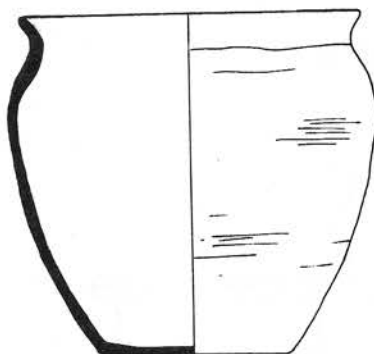
312.4 Cliffe Hl/4h also F2/1. 40-70. Rare.



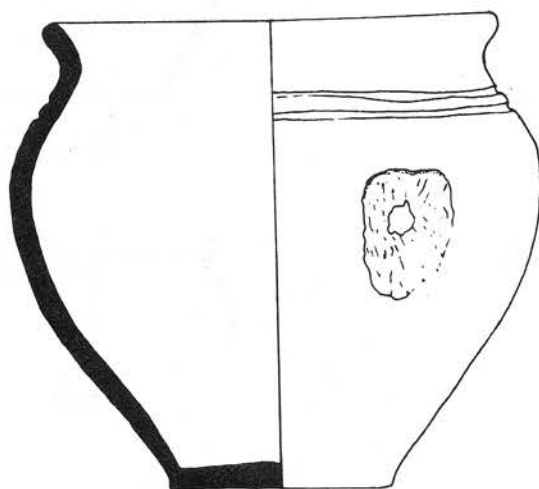
311.1



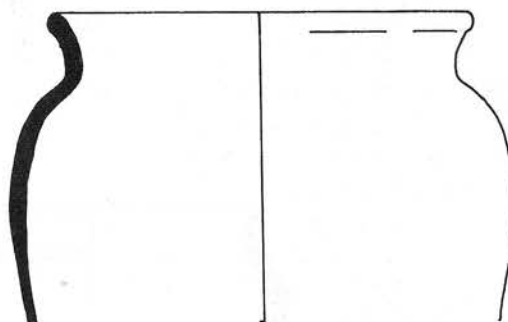
311.2



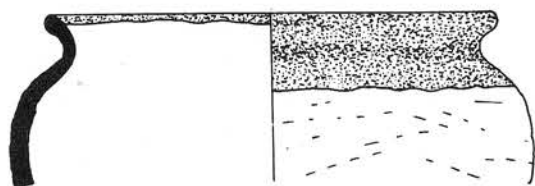
311.3



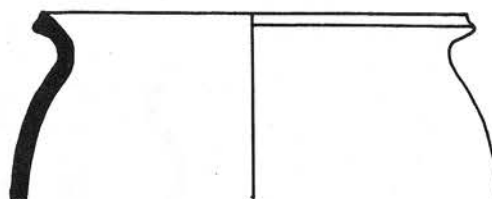
312.1



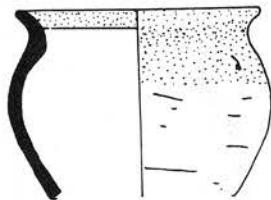
312.2



312.3



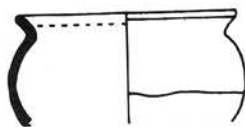
312.4



313.1



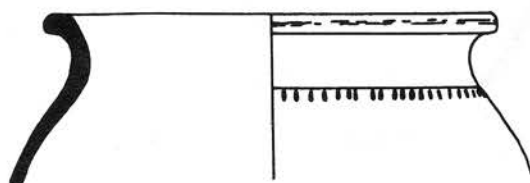
313.2



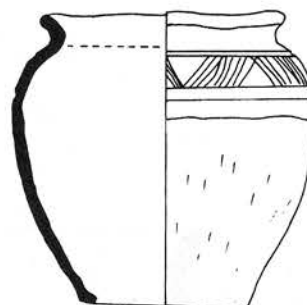
313.3



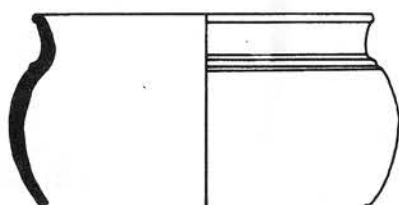
313.4



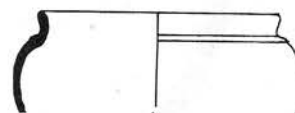
314.1



314.2



315.1



315.2



310.1

313 Squat, rounded form (40/50-70).  
313.1 Cooling S3/6b. MC.UG. 50-70. Rare.  
313.2 Cooling S3/6b. MC.UG. 50-70. Rare.  
313.3 Cliffe S3/4b. PC. 40-70. Rare.  
313.4 Cliffe SI/4b. HC. 50-80. Rare.

314 With decorated shoulders (30/50-70/100).  
This variant is closely related to bowl class 4F.  
314.1 Upchurch S1/1. JS. 60/70-100. Rare.  
314.2 Upchurch S3/1. RV. 30/40-70. Base broken. Unique.

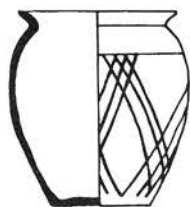
315 With cordoned shoulder (50-70/100).  
This variant is very close to being a "bowl".  
315.1 Upchurch S1/1. JS. 50-70/100. Rare.  
315.2 Upchurch F2/1. JD. 43-70. Rare.

Unclassified.  
310.1 Shorne S1/5b. Buff-brown. MA. 43-70. Unique. Class 3J Jars in "cooking pot" style.

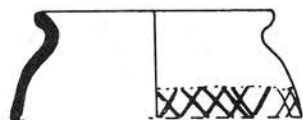
The 3J jar is a direct imitation of the BB1 "cooking pot". It was therefore not made before 110/120. The vessel is difficult to classify due to a tendency to break at the neck.

3J1 With short, straight, everted rim (110/120-150/190).  
3J1.1 Upchurch S1/lb. RP 617. 110/120-150/190. At West Tenter St. a similar vessel is in a deposit dated c. 120. Rare.  
3J1.2 Cliffe S1/4b. HC. 110/120-130/190. Common.  
3J1.3 Cliffe S1/4b and S5/4b. HC. 110/120-150/190. G137-139 give dates of 100-250. Southwark IIF is dated to the later second century. A similar vessel occurs in a grave with forms 2G1 and IE, giving an early second century date (Youens 1905b, lxxxix). Common.  
3J1.4 Cliffe S1/4b, PC. 110/120-150/190. Common.  
3J1.5 Cliffe S1/4b. HC. 110/120-150/190. Dover 739 is dated 160-190. Common.  
3J1.6 Cliffe S1/4b. HC. 110/120-150/190. Common.  
3J1.7 Cliffe S1/4b. HC. 110/120-150/190. Common.  
3J1.8 Shorne S1/5bs. AQ. 110/120-150/190. Common.

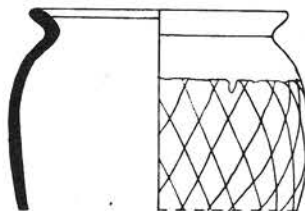
3J2 with thickened rim (120-200).  
3J2.1 Upchurch S1/lb. RA 822. 120-200. The vessel has a small hole in the base. The lack of decoration is unusual, especially as the upper parts of the vessel have been burnished, Hume (1954, 1.7) illustrates a waster of form 3J2 from Upchurch. Rare.  
3J2.2 Shorne S1/5b. MA. 120-200. Ospringe 281 is dated to the late second and early third centuries as is a similar vessel noted at Housteads. Common.  
3J2.3 Cliffe S1/4b. HC. 120-200. Dover 572 and Gillam 130 are dated ISO-ISO. Common.  
3J2.4 Shorne S1/5bs. AQ. 120-200. Common.



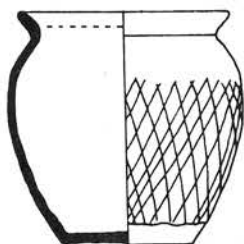
3J1.1



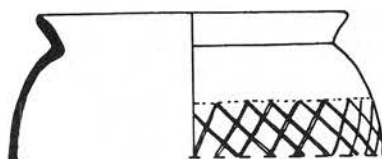
3J1.2



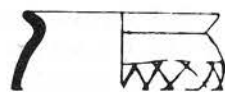
3J1.3



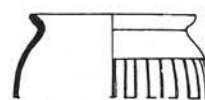
3J1.4



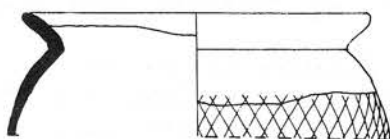
3J1.5



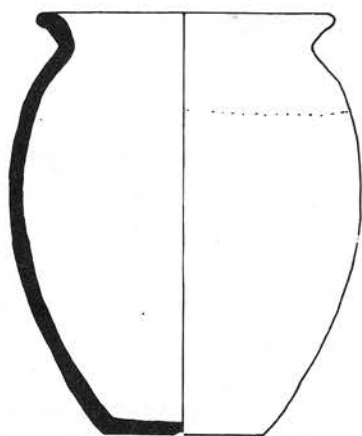
3J1.6



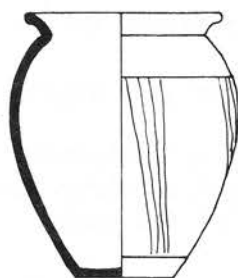
3J1.7



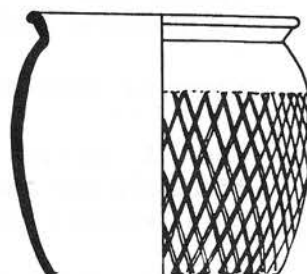
3J1.8



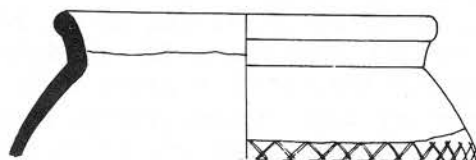
3J2.1



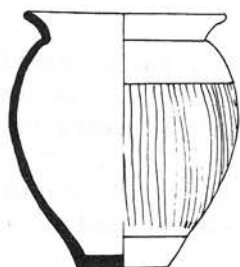
3J2.2



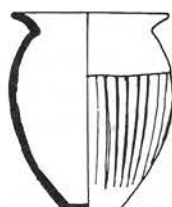
3J2.3



3J2.4



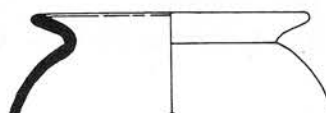
3J3.1



3J3.2



3J3.3



3J3.4

3J3 With sharply everted, smoothly curving rim (150-220/240). This is the most common variant of 3J in the second century. It possibly persists until the mid third (Vindolanda 47 is dated 223-5. Gillam 144 is dated 200-280).

3J3.1 Shorne Sl/5b. MA. 150/160-220/240. Parallels at Dover are dated by samian to 150-195 (400 and 404). Ospringe 281 is dated 200-260 whilst Ospringe 456 is 160-190. Abundant.

3J3.2-3 Shorne Sl/5b. MA. 150/160-220/240. A similar vessel occurs in a tightly dated grave at West Tenter St. to c. AD 180. Vessels are found at Springhead in the period 140-160. Southwark IIF5 is later second century, Abundant.

3J3.4 Upchurch Sl/lb. JD. 150/160-220/240. Gillam 143 is dated 190-280. At Dover, a similar vessel is thought to be early third century (870). Common.

3J4 Small, slim jars with narrow base and widely everted rim (130/140-180/220).

3J4.1 Upchurch Sl/lbs. RV 208. 130/140-180/200. There are many examples at Ospringe, including 29 (190-280) and 197 (140-180). At Dover, similar vessels are assigned dates of 90-150 (234, 704.). Common.

3J4.2 Shorne Sl/5b. MA. 130/140-180/200. Ospringe 368 is later second century. Common.

3J4.3 Shorne Sl/5b. MA. 130/140-180/220. Rare.

3J4.4 Cooling Sl/6b. DF. 130/140-180/220. Ospringe 181 is dated 190-260. Common.

3J5 The rim is turned over and thickened, the body is narrow..

3J5.1 Upchurch Sl/6bs. BM 57 4-1-3. 225-300+. Gillam 146 is dated 280-350 and the type is generally regarded as late: it is not found at Southwark which suggests at least a third century date. The obtuse lattice is generally thought to start being used in the period 225-250. Compare Dover 660. Rare.

3J5.2 Cliffe Hl/4h. HC. 140-300. Gillam 161 is dated 300-370 which is rather late for these industries, especially in this fabric. The fabric description of G. 161 is however similar to Hl/4h. The vessel may not be a true member of the 3J class. Rare.

3J6 Short, squat with straight rim.

3J6.1 Upchurch Sl/lb. MA. 5 UC 28. 130-200. Vessel has an indentation, possibly a waster. A similar vessel was found with samian of Antonine and third century date at Dover (529). Common.

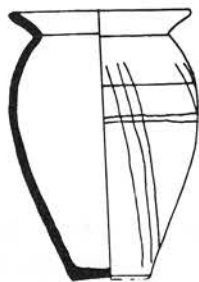
3J7 Narrow small jar with gently turned-out rim.

3J7.1-2 Cliffe Sl/4b. HC. 140/160-190/200. Ospringe 29 is dated 133-200. Ospringe 456 is dated 160-190. Common,

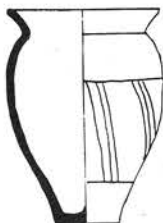
3J7.3 Upchurch Sl/lb. RV 198. 140/160-190/200. Rare.

3J8 A large form with flowing profile and ill-defined junction of neck and body.

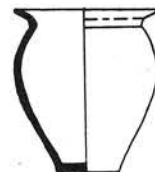
3J8.1 Upchurch Sl/lb. BM 83 12-13 436. 170-250. Rare.



3J4.1



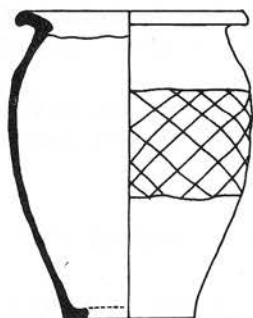
3J4.2



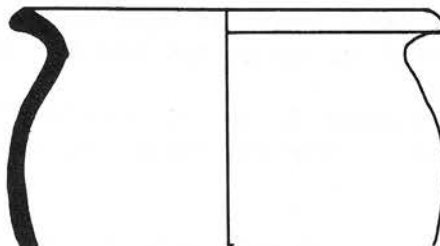
3J4.3



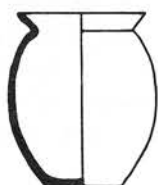
3J4.4



3J5.1



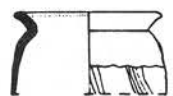
3J5.2



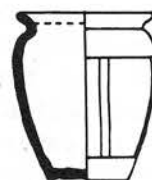
3J6.1



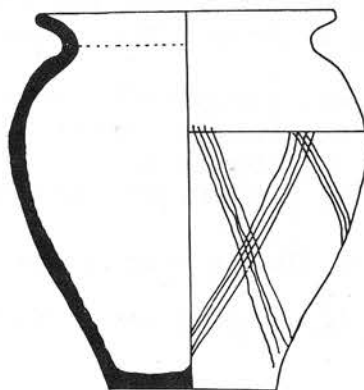
3J7.1



3J7.2

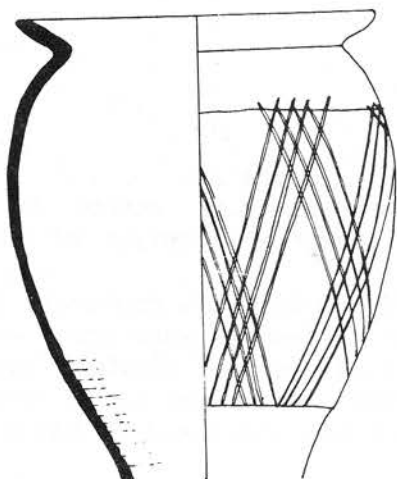


3J7.3

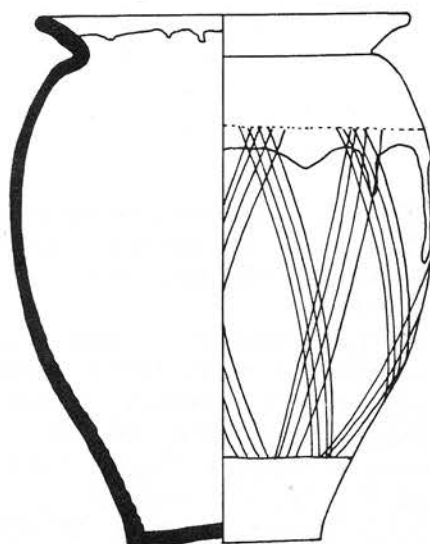


3J8.1

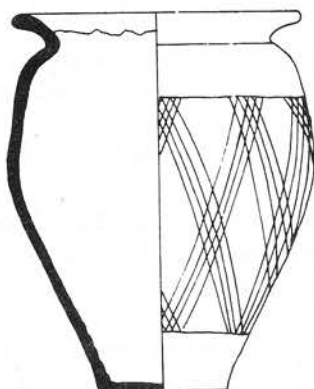




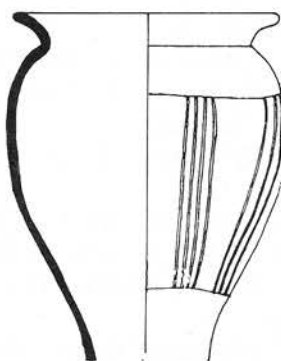
3J9.1



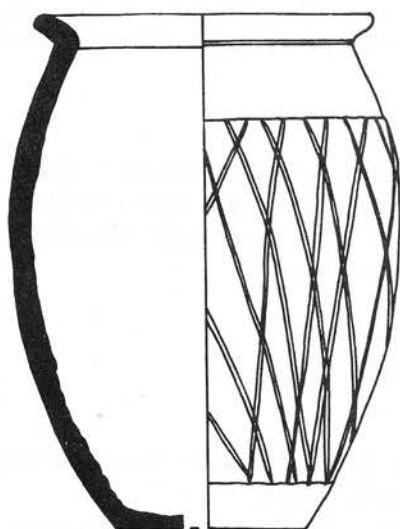
3J9.2



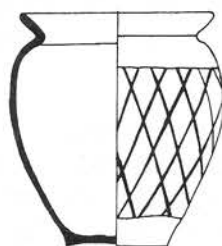
3J9.3



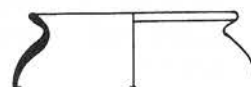
3J9.4



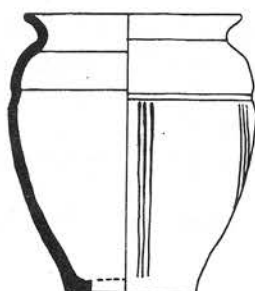
3J0.1



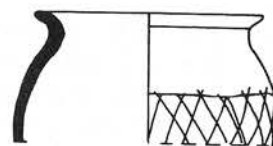
3J0.2



3J0.3



3J0.4



3J0.5

3J9 Tall, with narrow base and widely splayed rim.

This form is normally decorated with an open lattice. It is the most developed variant of 3J with the possible exception of 3J5. (170/190-250+).

3J9.1,3,4 Cooling Sl/6bs. MC.ABH. 170/190-210/230. Southwark IIF8 is later second and early third century. Similar vessels were found with mid third and fourth century pottery at Lullingstone (Meates, Greenfield and Birchenough 1950, 20, 24). With late second and third century Rhenish ware at Cobham (Tester 1961, 96, 22). One was found at Chalk and dated c.AD 300 (8, 13). Common.

3J9.2 Cooling Sl/6bs. MC.ADD. 170/190-210/230. The slip goes beyond the burnish and the decoration is carried over the slip. Common.

Unclassified.

3J0.1 Upchurch Sl/lb. RW 327. 130-170. Base holed. Unique.

3J0.2 Upchurch Sl/lbs. RW320. 150-200. Discoloured red with white flame marks. Unique. '

3J0.3 Upchurch Gl/lb. JD. 50-100. Unique. Probably not part of the 3J class.

3J0.4 Upchurch Sl/lb. BM 83 12-13 428. 110-150. The base is holed. The constriction is probably a relic belgic feature. Unique.

3J0.5 Cliffe Sl/4b. PC. 120-200. Rare. Southwark IIF10 is dated 120-200. Unique.

There are many other aberrant 3J examples which are not illustrated. 3L Lid seated jars.

This class includes all jars which are lid-seated or which have internal ridges or grooves that would facilitate lid-seating. The form is post-conquest (of Thompson C5-1) and appears to have been more popular in Thameside Essex. Kentish 3L vessels may be directly imitating those produced across the Thames. In Kent, 3L is popular from the late first century to the mid-second. In Essex they persist into the third and reach the northern frontiers in the form of Gillam 151 (Bidwell 1985, 173).

3L1 with everted rim (70-200/250).

3L1.1 Cliffe Sl/4b and Sl/4. HC. 70/80-200. A first century form in grog or shell at Southwark (IIA16) and at Colchester (Cam 275). Gillam 150-151 has a date of 140-260. It occurs in early third century deposits in West Kent (145, 342) and also in Canterbury. Common.

3L1.2 Upchurch Sl/1. JD. 70/80-140. Rare.

3L1.3 Cliffe Sl/4b orange. 70/80-140. Common.

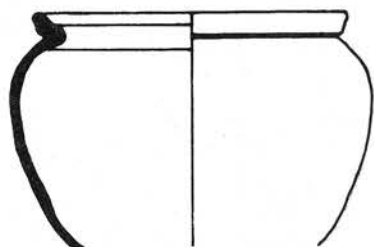
3L1.4 Cooling sl/6b. MC.PM. 170/190-210/230. Rare.

3L2 With groove on top of rim (50-140).

3L2.1 Cliffe H2/4. HC. 50-120. Thompson C1-1 is mid-first century. West Kent 63, 160 is late first and early second. Rare.

3L2.2 Cliffe H2/4 and H1/4h. HC. 50/70-140. Southwark IA11 is pre-Flavian. Rare, although there are many variations on the grooved rim jar at Cliffe in H2/4.

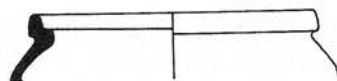
3L2.3 Cliffe H2/4 also S3/1 and Sl/4. HC. 50/70-140. Rare.



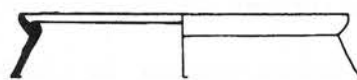
3L1.1



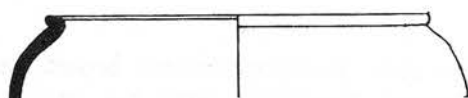
3L1.2



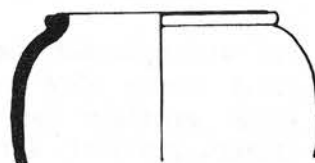
3L1.3



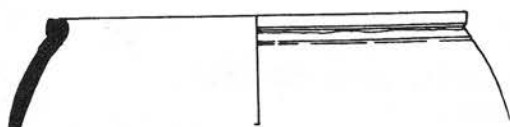
3L1.4



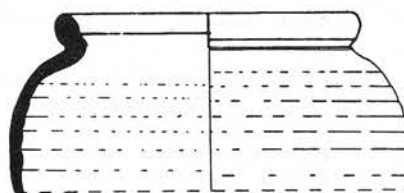
3L2.1



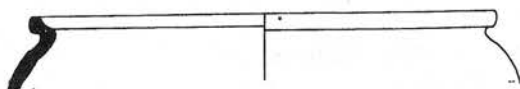
3L2.2



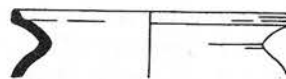
3L2.3



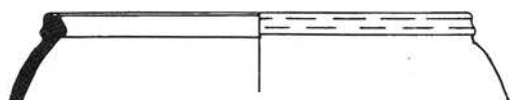
3L3.1



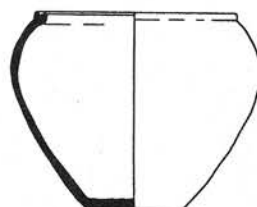
3L4.1



3L5.1



3L6.1



3L7.1

3L3 With thick, upright rim.

3L3.1 Cliffe S1/4. HC. 70-140. Rare.

3L4 with rim at right angles to ledge.

3L4.1 Higham S1/3b. CH. 190-240. Rare. Oakleigh 33.

3L5 Vessel similar to class 3J.

This variant breaks at the junction of neck and body.

3L5.1 Higham S1/3b and S1/6b. 170-230. The illustration is based on Oakleigh 39-41. Also found in the MC collection. Rare.

3L6 With square sectioned, grooved rim.

3L6.1 Cliffe H2/4. HC. 70-130. Rare.

3L7 With grooved bead-rim.

3L7.1 Cliffe H2/4 and S1/4. HC. 70-110. Reconstruction based on Mucking style graffito jar (23, 24), although Kentish jars do not appear to feature graffiti. Rare.

3L8 The ledge is formed by a heavy sloping rim.

3L8.1 Cliffe S1/4b and S1/4. HC. 50/70-140/200. Rare.

3L9 Ledge is at top of an everted rim.

3L9.1 Cliffe S3/4. PC. 40/50-70/80. Rare.

3L10 The ledge is formed by an internal bead (50-150).

3L10.1 Cliffe H2/4. HC. 70-110. Common.

3L10.2 Cooling S3/6. MC.XO. 50-70. Rare.

3L10.3 Cliffe S1/4p. PC. 70-150. One vessel was found in a Springhead deposit dated 120-150. Common.

3L10.4 Cliffe S3/4. HC, Higham Lane. 50-70. Vessel has a wasting blister. Rare.

3L10.5 Cliffe S1/4. HC. 70-150. Common.

Unclassified.

There is a great variety of lidded vessels at Cliffe, in particular, which cannot be satisfactorily classified.

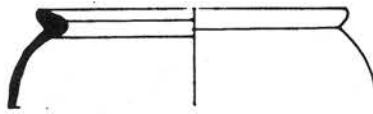
3L0.1 Cooling S1/6. MC.ZY. 170/190-210/230. Unique.

3L0.2 Cooling S5/6. MC.JX. 100-230. Unique.

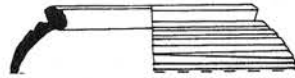
3L0.3 Upchurch N1/1b also S1/1 and S1/3. JD. 70-150/250. Oakleigh 44 is dated to the mid-second and mid-third centuries. The vessel is possibly a carinated bowl as Thompson D2-1.3. Rare.

3L0.4 Cliffe S1/4 and S5/4b. HC. 110-130. Gillam 113 is 110-130. Unique.

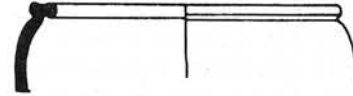
3L0.5 Upchurch S1/1. JS. 70-150. Analysed as UA 20, Monaghan 1982b. Rare.



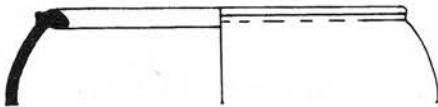
3L8.1



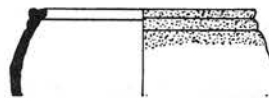
3L9.1



3L10.1



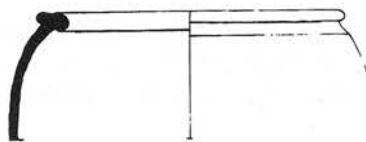
3L10.2



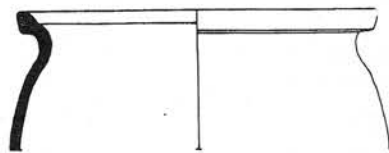
3L10.3



3L10.4



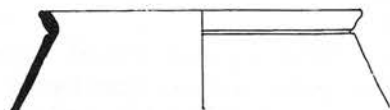
3L10.5



3L0.1



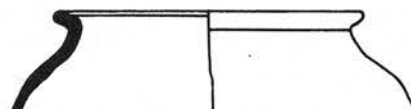
3L0.2



3L0.3



3L0.4



3L0.5

[To Contents page](#)