

TYPE 4 BOWLS.

Page 112	CLASS 4A. S-profile bowls.
Page 118	CLASS 4B. Footring bowls.
Page 118	CLASS 4C. High waisted bowls.
Page 122	CLASS 4D. Simple bowls.
Page 124	CLASS 4E. Bead rimmed bowls.
Page 124	CLASS 4F. Cordoned bowls.
Page 128	CLASS 4G. Carinated bowls (Belgic style).
Page 130	CLASS 4H. Carinated bowls (Continental style).
Page 130	CLASS 4I. Shallow bowls.
Page 132	CLASS 4J. Fine cordoned bowls.
Page 134	CLASS 4L. Lid-seated bowls.

#### TYPE 4 BOWLS.

CLASS 4A. S-profile bowls.  
CLASS 4B. Footring bowls.  
CLASS 4C. High waisted bowls.  
CLASS 4D. Simple bowls.  
CLASS 4E. Bead rimmed bowls.  
CLASS 4F. Cordoned bowls.  
CLASS 4G. Carinated bowls (Belgic style).  
CLASS 4H. Carinated bowls (Continental).  
CLASS 4I. Shallow bowls.  
CLASS 4J. Fine cordoned bowls.  
CLASS 4L. Lid-seated bowls.

#### Class 4A S-profile bowls.

This, the most common class of bowls, is descended directly from class 4F. The vessels are normally burnished on the neck, inside of rim and upper body. Sometimes they are also burnished around the foot.

4A1 With grooved and cordoned neck, normally with a decorated band and a smooth out turned rim (70-120/150).

4A1.1 Cliffe S1/4b. PC. 70/90-120. Examples in London are pre-120. Common.

4A1.2 Cliffe S1/4b. PC. 70/90-120. Common.

4A1.3 Cliffe S1/4b. HC. 70/90-120. Southwark IIF6 is a later second century type. Gillams types which bear some resemblance to 4A1 are G. 145 (230-300) and G. 144 (200-280). Common.

4A1.4 Cliffe S1/4b. PC. 70/90-120. Common.

4A1.5 Upchurch S1/lb. 70/90-120. Common.

4A1.6 Shorne S1/5b. MA. 70-120. Common.

4A1.7 Cooling S3/6b. MC. 50-70. Common.

4A1.8 Cliffe S1/4b. PC. 70-120. Common.

4A1.9 Upchurch SI/lbs. BM 1961 7-5 120. 70-120. Vessel is lopsided, there is a hole drilled in the rim. The lower body marking is in slip, the degree of erosion suggesting that it is ancient. Rare.

4A1.10 Upchurch S1/lbs. JS. 70-120. Rare.

4A1.11 Cliffe S1/4b. HC. 70-120. Rare.

4A1.12 Cliffe S1/4b. HC. 70-120. Rare.

4A1.13 Upchurch S1/lb. MM. 110-200. This vessel could equally well be included in variant 4A2; the two variants merge. Southwark I IE is late first and second century. This vessel was illustrated by Hume, 1954, 2.6. Common.

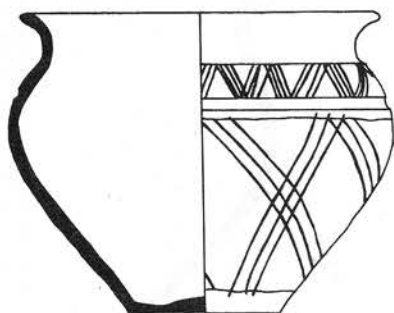
4A2 With a rolled or thickened rim.

This variant appears to have superseded 4A1 circa 120 and was made until 230-250. It is the commonest bowl after AD 120.

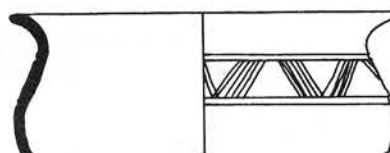
4A2.1 Upchurch S1/lb. MK 5 UC 7. 110-200. Southwark HE also embraces this variant. Abundant.

4A2.2 Upchurch S1/l. RT 149. 110-200. The decoration has eroded away. Abundant.

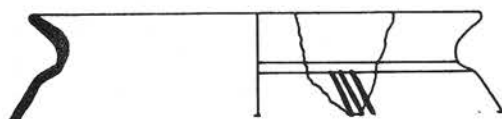
4A2.3 Upchurch S5/lb. RW. 110-150. Discoloured and lopsided. Common.



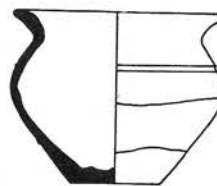
4A1.1



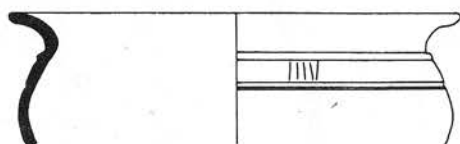
4A1.2



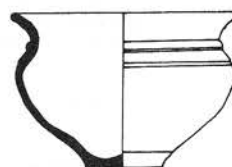
4A1.3



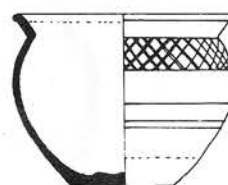
4A1.4



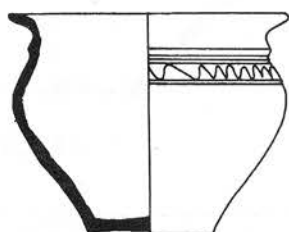
4A1.5



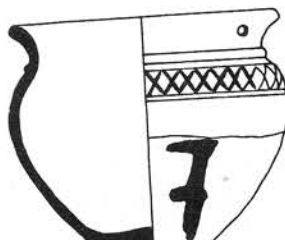
4A1.6



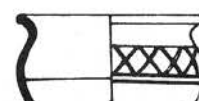
4A1.7



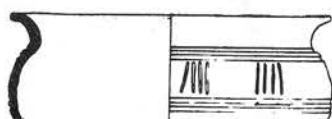
4A1.8



4A1.9



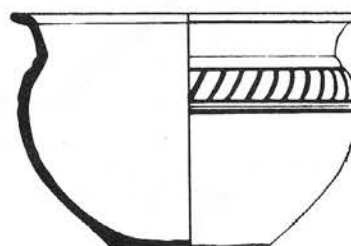
4A1.10



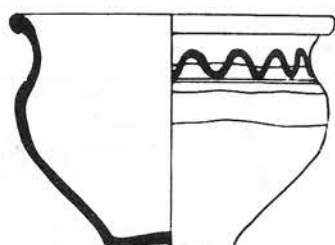
4A1.11



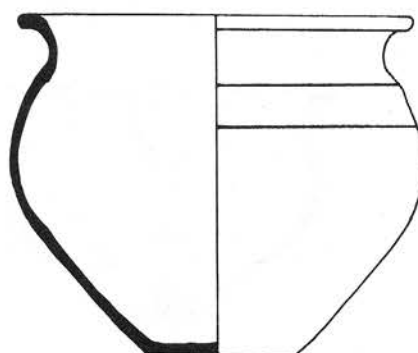
4A1.12



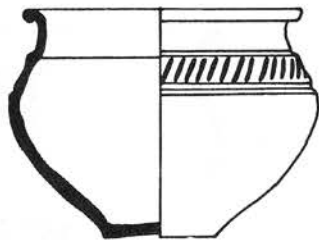
4A1.13



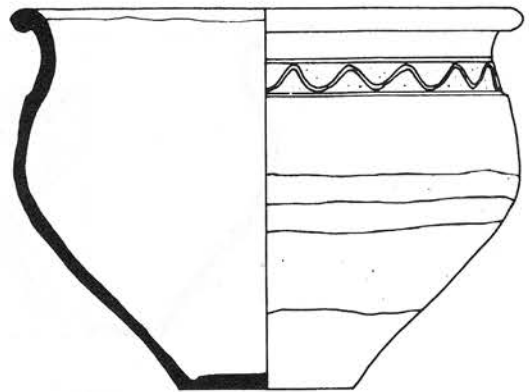
4A2.1



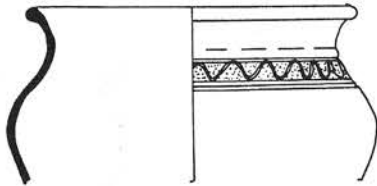
4A2.2



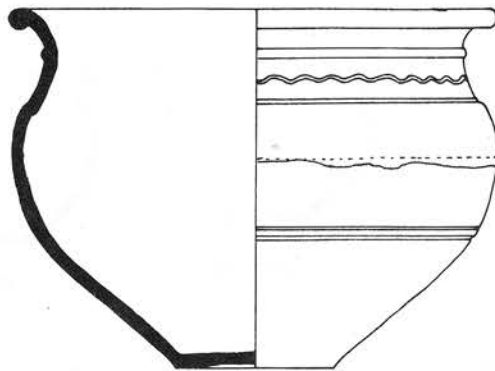
4A2.3



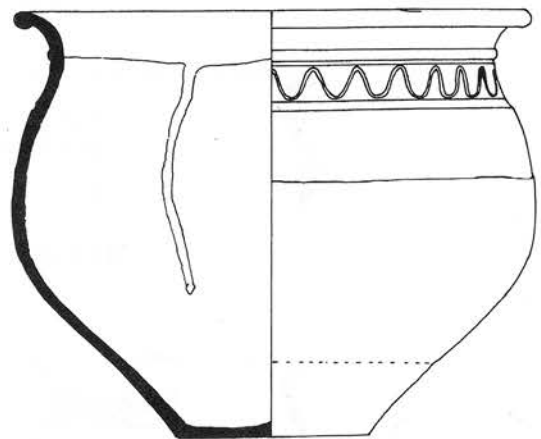
4A2.5



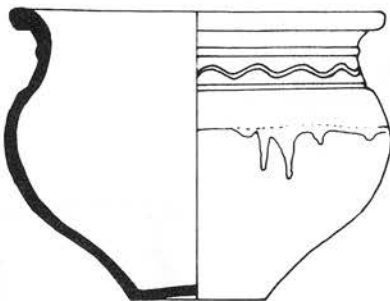
4A2.4



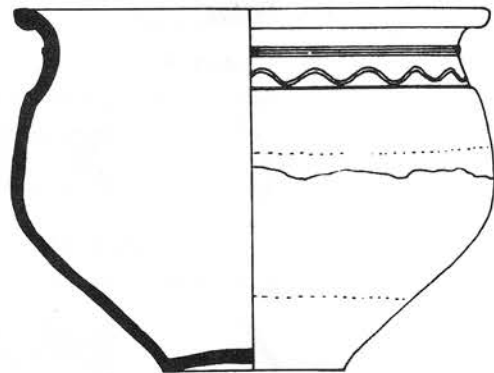
4A2.6



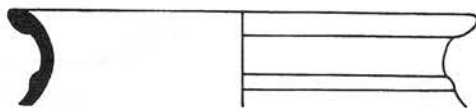
4A2.7



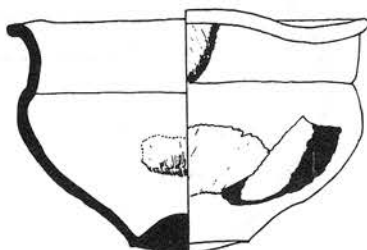
4A2.8



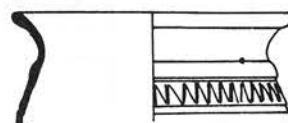
4A2.10



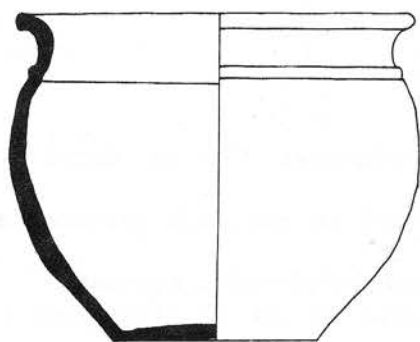
4A2.9



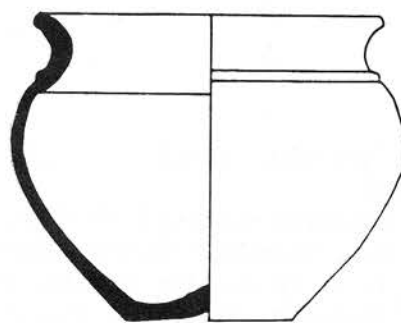
4A2.11



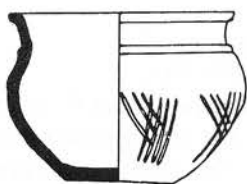
4A2.12



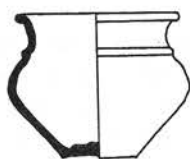
4A3.1



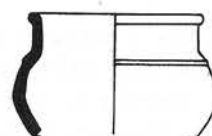
4A3.2



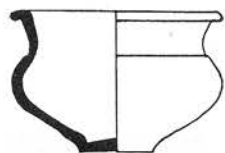
4A3.3



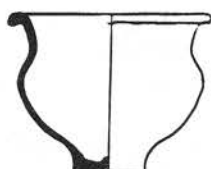
4A3.4



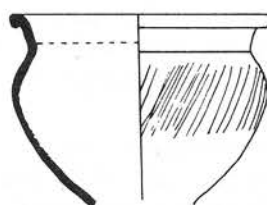
4A3.5



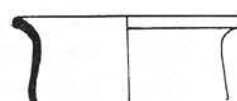
4A4.1



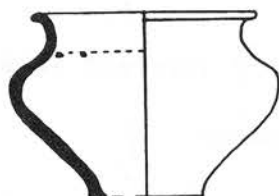
4A4.2



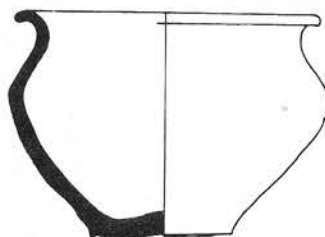
4A4.3



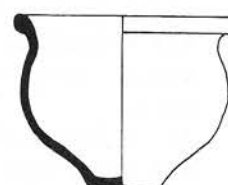
4A4.4



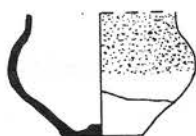
4A4.5



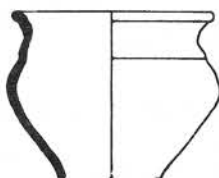
4A4.6



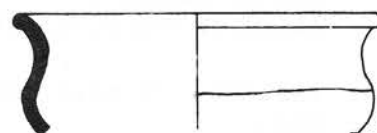
4A4.7



4A4.8



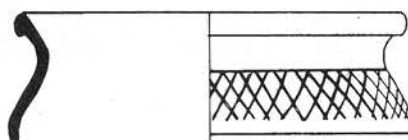
4A4.9



4A4.10



4A4.11



4A4.12



4A4.13

4A2.4 Upchurch S1/lb. JD. 110-200. Richborough 425 is dated 90-125. Abundant,  
 4A2.5 Upchurch S1/lbs? RP 599. This vessel is not well provenanced and could  
 be a "Cooling" S1/6bs. Rare.  
 4A2.6, 7, 8, 10 Cooling S1/6bs. MC.ABH. 170/190-210/230. Abundant.  
 4A2.9 Upchurch S1/l. JS. 110-200. Analysed as UD 78 (Monaghan 1982b).  
 Common.  
 4A2.11 Upchurch S1/lb. RW 37, Hartlip. 110-200. Waster. Common. 4A2.12  
 Upchurch N1/lb. JD. 100-200. Rare.

4A3 With a single neck cordon and no decorative band. This is the earliest  
 variant of the class (40/50-90).

4A3.1 Upchurch S3/1. BM 53 5-2 19. 50-70, A development of pre-conquest types,  
 Thompson E3-2 and D1-1. Paralleled in a deposit of c. AD 60 (Williams et. al.  
 1975, 133, 63). This vessel is from a cremation group. Common.  
 4A3.2 Upchurch S1/1. RM 10. 70-90. Common.  
 4A3.3 Upchurch S3/1. RT 22. 50-70. Vessels of this type have been found in  
 pre-120 deposits at Springhead. Common. 4A3.4 Upchurch S1/lb. RW 705. 70-90.  
 Common. 4A3.5 Upchurch F2/1. JD. 40/50-70. Common.

4A4 Smaller vessel without neck cordon or decoration (50/70-200/300).

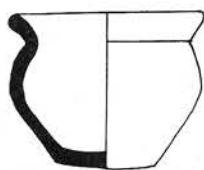
4A4.1 Upchurch S1/lb. RT 171. 150-250/300. Ospringe 429 was with samian  
 dated 190-260. Chalk 7.2 is dated to AD 300. Common.  
 4A4.2 Upchurch N2/lb. MW, Milfordhope 1867. 70-150. Common.  
 4A4.3 Upchurch N2/lb. RW 212. 70-150. Common.  
 4A4.4 Cooling S7/6b. MC.HJ. 190-210/230. Rare.  
 4A4.5 Upchurch N2/lbs. RW 294. 70-150. Base is very thin and is holed. Rare.  
 4A4.6 Upchurch S1/lb light pink. RW 192. 70-110. Common. 4A4.7 Cooling S1/6.  
 KC.ABH. 170/190-210/230. Rare. 4A4.8 Upchurch S3/lbp. RT 168. 50-70. Rare.  
 4A4.9 Upchurch S1/lb. RP 624. 70-110. Rare. 4A4.10 Upchurch S1/lb. GS. 70-110.  
 Common. 4A4.11 Cooling S1/6b. MC.GW. 170/190-210/230. 4A4.12 Cooling S5/6b.  
 MC.AJC. 170/190-210/230. 4A4.13 Cliffe S1/4. HC. 70-200. Rare.

4A5 Small vessels, without cordon but with well defined shoulder (40/50-  
 150).

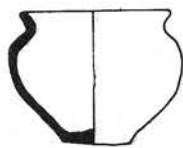
4A5.1 Cooling S3/6. EF. 50-70. Common.  
 4A5.2 Upchurch S3/lhb. RP 612. 40-70. Spalled. The style persists into the  
 second century at Canterbury. Common.  
 4A5.3 Shorne S1/5b buff-orange. MA. 70-150. Common.  
 4A5.4 Shorne S1/5b yellow-brown. 70-150. Common.

Unclassified.

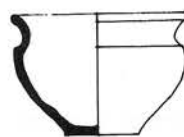
4A0.1 Upchurch S1/lb. MK 5 UC 11. 70-150. Unique.  
 4A0.2 Upchurch S1/lbs. JS, 120-250. Possibly a "Cooling" 4A2. Rare.  
 4A0.3 Cooling S1/6b. MC.GK. 170/190-210/230. Unique.  
 4A0.4 Cooling S1/6. MC.NS. 170/190-210/230. Unique.



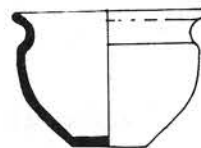
4A5.1



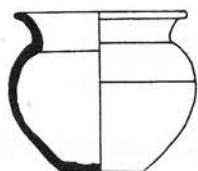
4A5.2



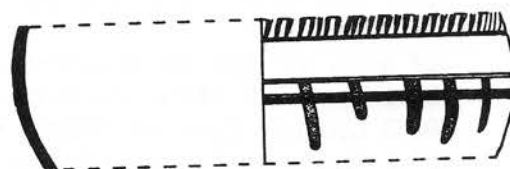
4A5.3



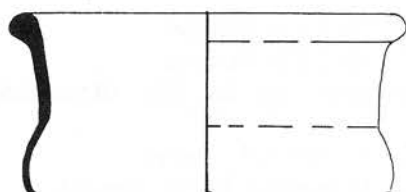
4A5.4



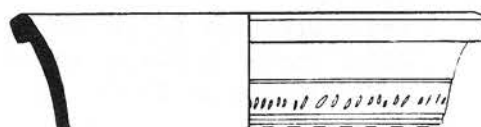
4A0.1



4A0.2



4A0.3



4A0.4

#### Class 4B Footring bawls.

A range of bowls in generally fine fabrics, usually well formed, with a foot-ring.

4B1 Plain, with everted and beaded rim (50-110/130).

4B1.1 Upchurch S3/1 buff. RW 319. 50-110. Flavian to early second century at Canterbury Castle (122, K). Common.

4B1.2 Upchurch N2/lb. MM SI 1962 (6), Milfordhope. 70-130. Common. 4B1.3 Upchurch F2/1. JD. 40-70. Rare.

4B2 with decorated shoulder.

4B2.1 Upchurch N1/lb. GS. 70-130. Common.

4B3 Squat, spherical form.

4B3.1 Shorne S1/5b yellow-buff. MA. 100-170. Unique.

4B4 With Upright or inward-leaning neck (40-90/120). 4B4.1 Upchurch N4/lb white/orange. MB. 45-90. Unique. 4B4.2 Cooling S1/6. EF. 50/70-120. Unique. 4B4.3 Upchurch N4/lb. white/orange. MB. 45-90. Canterbury Castle (65, 150) is pre-125. Rare.

#### Unclassified.

Variations on this theme were common Upchurch products in the period 45-130.

4B0.1 Upchurch N1/lb. BM 83 12-13 438. 70-130. Unique. 4B0.2 Upchurch N2/lb. BM 83 12-13 430. 70-130. Unique.

4B0.3 Upchurch N2/lb. JS. 70-130. Analysed as UA 30, (Monaghan 1982b). Unique.

4B0.4 Upchurch N2/lb orange-pink. RW 207. 70-130. Rare.

4B0.5 Cliffe S1/4b. HC. 70-110. Compare Thompson B1-3. Unique.

#### Class 4C High waisted bowls.

This form is the late Iron Age high waisted or cordoned bowl, Thompson D2-2. It probably immediately preceded class 4F as the local style of bowl. It is made in Romanised fabrics. The vessels are highly individual and do not fall easily in to neat categories.

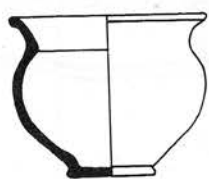
4C1 With cordoned shoulder and thickened rim (40-60/70). 4C1.1 Upchurch S3/lbs. RW 305. 40-70. Base holed. Rare. 4C1.2 Upchurch S3/lhb. RT 100. 40-60. Base holed. Rare.

4C1.3 Upchurch S3/1. RW 596. 40-70. Thompson sees the girth-groove and the sandy fabric as being post-conquest (D1-3). Rare. 4C1.4 Upchurch S3/1. RW 325. 40/50-70. Hole in base. Rare.

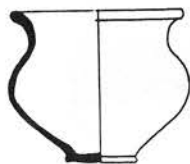
4C2 With simple out-turned rim (40-60/70).

4C2.1 Upchurch S3/lh. RW 268, Milfordhope 1867. 40/50-70. Rare. 4C2.2 Cooling S3/6h orange. EF. 50-70. Rare. 4C2.3 Cooling N5/6. MC. 40-70. Fabric unique, form rare. 4C2.4 Cooling S1/6. MC.KO. 50-70. Rare.





4B1.1



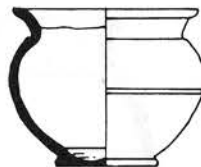
4B1.2



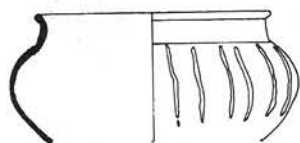
4B1.3



4B2.1



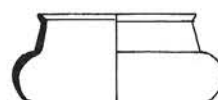
4B3.1



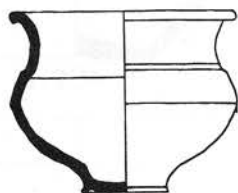
4B4.1



4B4.2



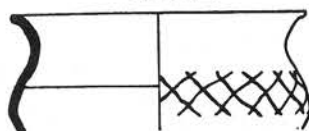
4B4.3



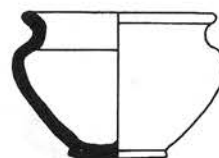
4B0.1



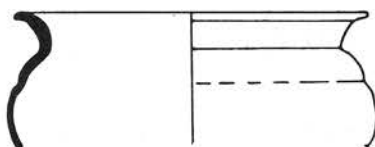
4B0.2



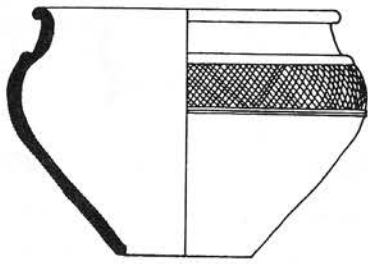
4B0.3



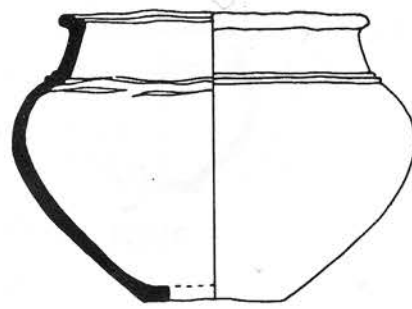
4B0.4



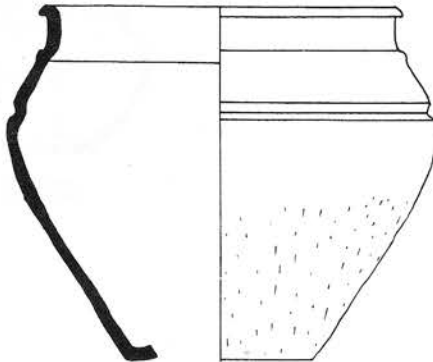
4B0.5



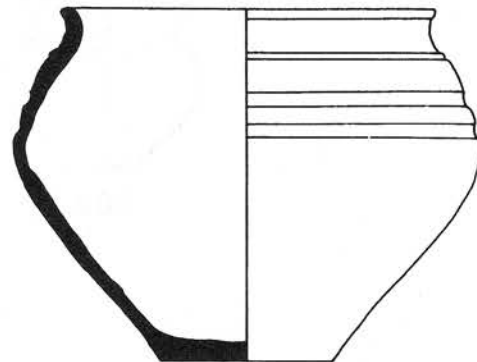
4C1.1



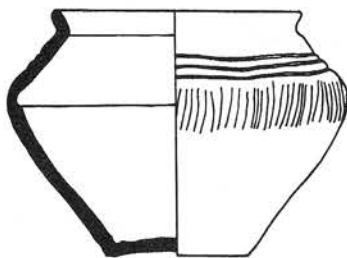
4C1.2



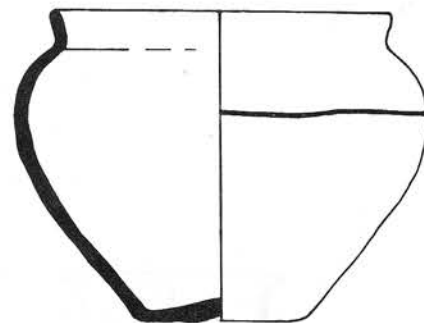
4C1.3



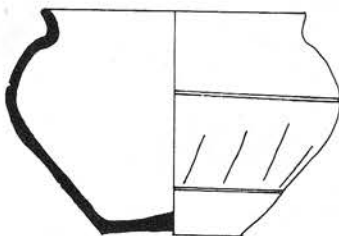
4C1.4



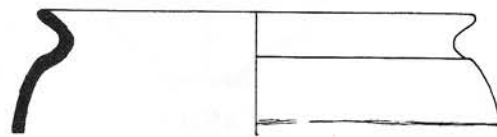
4C2.1



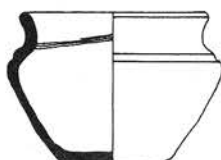
4C2.2



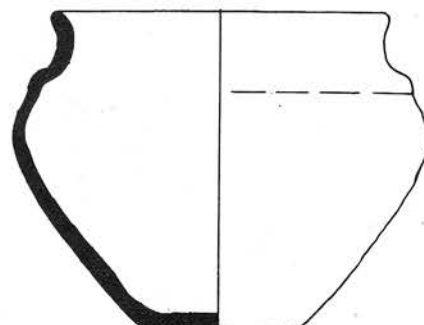
4C2.3



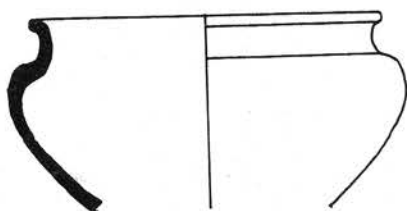
4C2.4



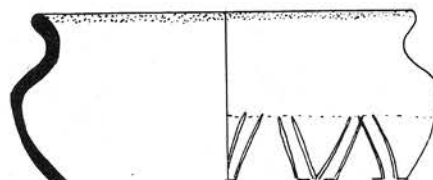
4C3.1



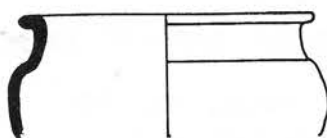
4C3.2



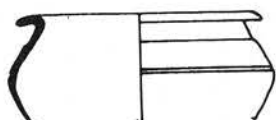
4C4.1



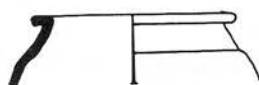
4C4.2



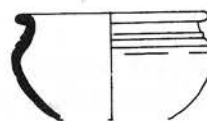
4C4.3



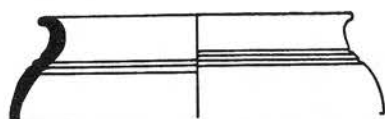
4C5.1



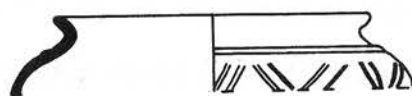
4C5.2



4C5.3



4C6.1



4C6.2

4C3 With out-turned rim plus cordons.

4C3.1 Upchurch S3/lb. RW 317. 40/50-70. West Kent 92, 250, is dated to the late first century. Rare.

4C3.2 Upchurch S3/1. RT 152. 40/50-70. Rare.

4C4 Squat, wide mouthed vessel (50-100). 4C4.1 Cliffe H1/4h. HC. 50-100. Rare.

4C4.2 Cliffe H2/4p. HC. 70-100. Rare.

4C4.3 Upchurch S1/lb. JS. 50-100. Analysed as UA 19 (Monaghan 1982b). Rare.

4C5 Squat vessel with horizontal rim (40-70).

4C5.1 Upchurch H1/lbs. JD. 50-70. Rare.

4C5.2 Upchurch S1/1. JD. 50-70. Rare.

4C5.3 Cliffe S3/4b. HC. 40-70. Rare.

4C6 Virtually neckless vessel.

These are common at Upchurch, but there is a great variety in between individual vessels.

4C6.1 Upchurch N2/lb. JS. 50-100. Rare.

4C6.2 Upchurch S3/lb. JS. 50-100. Rare.

Class 4D Simple bowls with gently everted rim.

A crude form, no two vessels are alike and they can only broadly be subdivided.

4D1 Plain (10-50/70).

4D1.1 Upchurch S3/lh. JD. 10-40/50. This is a late Iron Age and early post-conquest form in Canterbury. Common.

4D1.2 Upchurch F2/lb. JD. 10-40/50. Rare.

4D1.3 Upchurch F1/lhb. JD. 10-40/50. Common.

4D1.4 Upchurch S3/lhb. JD. 10-40/50. Common.

4D1.5 Cooling N5/6h buff. MC.KB. 40/50-70. Unique.

4D1.6 Upchurch S1/lb. JD. 40-70. Rare.

4D2 With defined neck (50-80).

4D2.1 Upchurch S1/lb. JD. 50-80. Unique.

4D2.2 Upchurch F2/1. RW 632. 50-70. Distorted waster. Rare.

4D3 With internally thickened rim (50-100).

4D3.1 Cliffe S1/4b. HC. 70-100. Thompson B-1-5 is later first century. Rare.

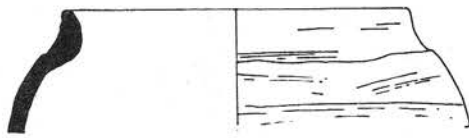
4D3.2 Cliffe H1/4h. HC. 50-90. Cam 229b is pre- conquest. Rare.

4D4 Deep bowl with out turned rim. 4D4.1 Cooling S4/5b. MC.ABU. 50-70. Rare.

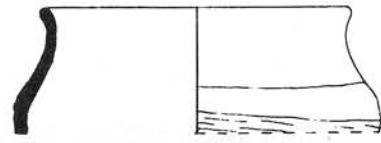
4D4.2 Cooling S3/6b. MC.UG. 50-70. Rare.

Unclassified.

4D0.1 Upchurch G1/1. JD. 40-60. Unique. 4D0.2 Upchurch S3/1. FS. 40/50-70. Rare.



4D1.1



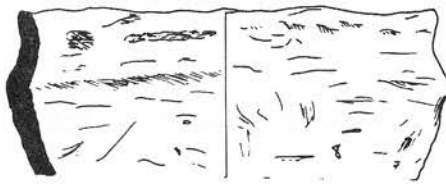
4D1.2



4D1.3



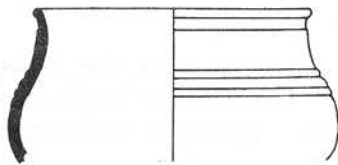
4D1.4



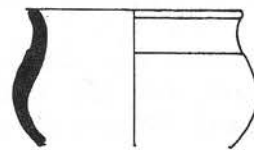
4D1.5



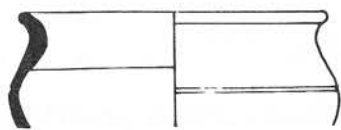
4D1.6



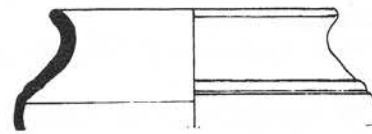
4D2.1



4D2.2



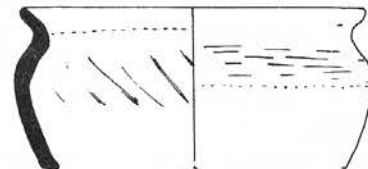
4D3.1



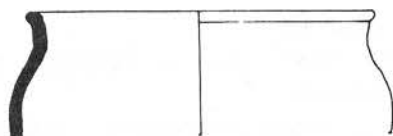
4D3.2



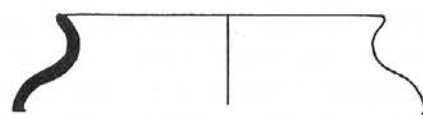
4D4.1



4D4.2



4D0.1



4D0.2

Class 4H Bead rimmed bowls.

An uncommon class of the trans-conquest period without many distinct variants.

4E1 With curved walls (10-110).

4E1.1 Upchurch F1/lp. JD. 10-50/70. Canterbury Castle 117 is pre-65.

Thompson C1-3 is early first century to the invasion. Rare.

4E1.2 Cliffe H1/4h. PC. 40/50-100. This vessel may be a specialist colander form and therefore belong to Type 11. Unique.

4E1.3 Cliffe H1/4h. HC. 40/50-100. Rare.

4E1.4 Cliffe H2/4. HC. 70-110. Rare.

4E2 Narrow vessels with straighter sides than 4E1 (10-110). 4E2.1 Cliffe N1/4b. HC. 50-70. Rare.

4E2.2 Cliffe H2/4. JD. 70-110. Rare.

4E2.3 Upchurch F1/lh. JD. 10-40. Rare.

Unclassified.

4E0.1 Upchurch N1/lb. JD. 50-100. Unique. Class 4F Cordoned bowls.

This class was the successor of class 4C and was the immediate ancestor of class 4A. The vessels have a more distinctive neck than 4C but lack the clean 'S' profile of 4A. Thompson B1-1 spanned the conquest.

4F1 With multiple shoulder cordons (50-80).

4F1.1 Upchurch S1/lb. JD. 50-80. Richborough 41-42 are Claudian. Common.

4F1.2 Cliffe S1/4b pink. HC. 50-80. Thompson B3-4 is belgic. West Kent 64,

162-163 are given an early second century date. Rare.

4F1.3 Upchurch S1/1. JS. 50-80. Analysed as UD 74 (Monaghan 1982b). Common.

4F1.4 Upchurch S1/lb. RP 626. 50-80. Rare.

4F2 Normally with single neck cordon, more cursive profile and small bead on rim (40-90).

4F2.1 Upchurch F2/lp. JS. 40-60. Thompson B1-4 is trans-conquest. Common.

4F2.2 Upchurch S1/lb. JS. 50-90. Common. 4F2.3 Upchurch S1/lb. JD. 50-90. Rare.

4F2.4 Upchurch F2/1. JD. 40-60. Common: sometimes with double neck cordon.

4F2.5 Upchurch S2/1. JD. 40-70. Canterbury Castle 85 is dated up to AD 70. Common.

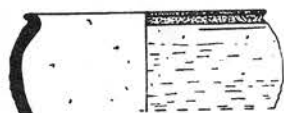
4F2.6 Upchurch N4/lb. MB. 45-60. Rare.

4F3 With inward-leaning neck (40-70).

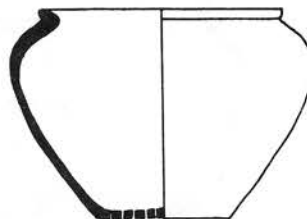
This variant approaches closest to class 4C.

4F3.1 Upchurch S2/1. JD. 40-70. West Kent 204 is thought to span the conquest. Southwark IIB2 is Flavian. Common.

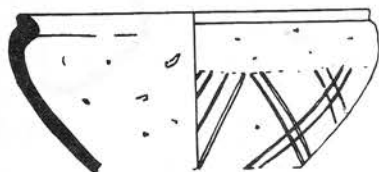
4F3.2 Upchurch N4/lb. MB. 45-60. Ian Jackson considers this vessel style to coexist with early 4A3 vessels. Rare.



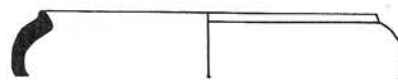
4E1.1



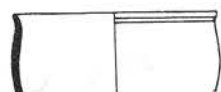
4E1.2



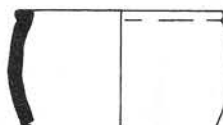
4E1.3



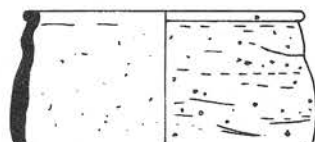
4E1.4



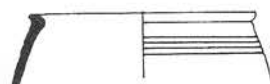
4E2.1



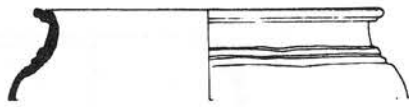
4E2.2



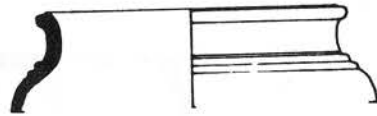
4E2.3



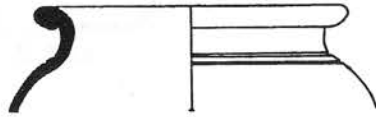
4E0.1



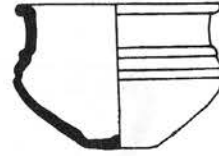
4F1.1



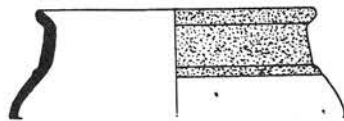
4F1.2



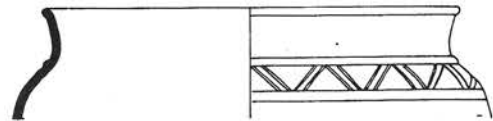
4F1.3



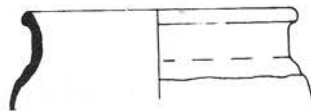
4F1.4



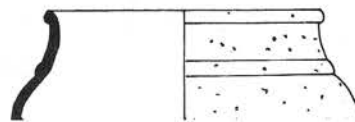
4F2.1



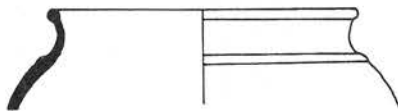
4F2.2



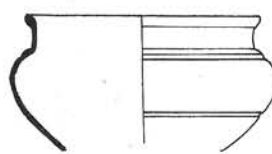
4F2.3



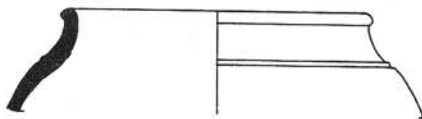
4F2.4



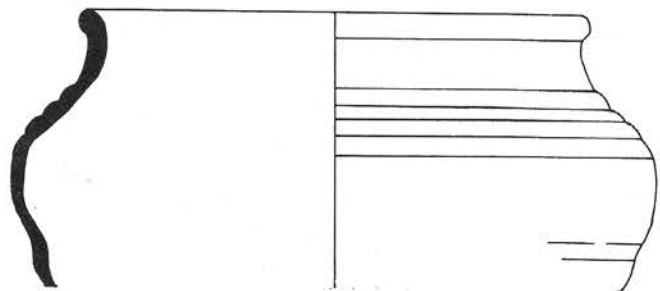
4F2.5



4F2.6

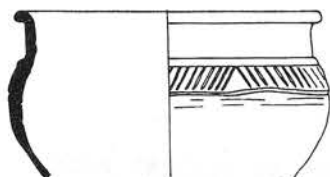


4F3.1

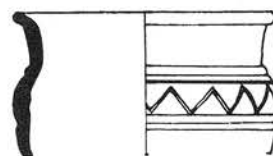


4F3.2

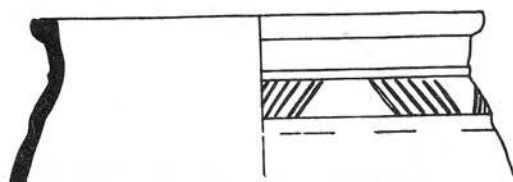




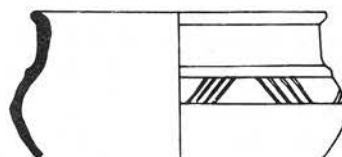
4F4.1



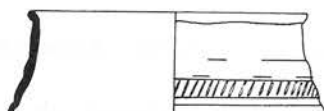
4F4.2



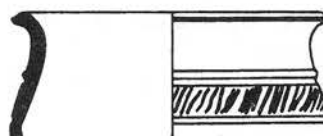
4F4.3



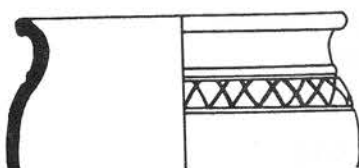
4F4.4



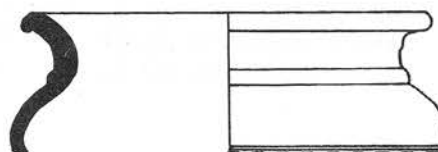
4F4.5



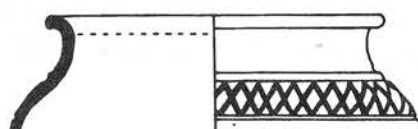
4F4.6



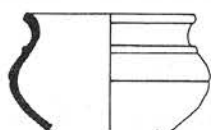
4F5.1



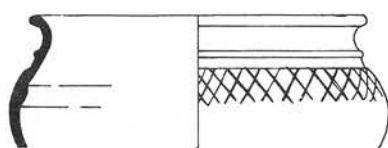
4F5.2



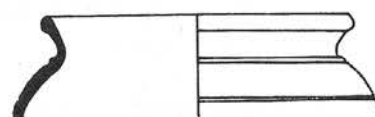
4F5.3



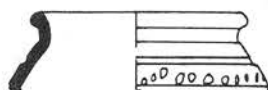
4F6.1



4F6.2



4F6.3



4F0.1

4F4 With decorated band on shoulder and an upright neck .  
There is great variety within this variant which seems to be the prototype for class 4A (70-120).

4F4.1 Upchurch S5/lb. JS. 70-120. Similar vessels are known from early second century deposits (Williams et. al. 1975, 129, 22). Common.

4F4.2 Upchurch S1/lb. GS. 70-120. Rare.

4F4.3 Upchurch S1/lb. JS. 70-120. Common.

4F4.4 Upchurch S1/lb. GS. 70-100. Common.

4F4.5 Upchurch S1/lb. JS. 70-120. Rare.

4F4.6 Upchurch S1/lb. JS. 70-120. Analysed as UA 31 (Monaghan 1982b). Common.

4F5 With heavy everted rim (70-120).

4F5.1 Upchurch S1/lb. JS. 70-120. Analysed as UA 32 (Monaghan 1982b). Common.

4F5.2 Upchurch S1/1. JS. 70-120. Analysed as UA 39 (Monaghan 1982b). Common.

4F5.3 Upchurch S1/lb and S3/lb. JS. 70-120. Analysed as UA 14 (Monaghan 1982b). Common.

4F6 With everted rim and globular body (70-120/150). 4F6.1 Upchurch S1/1. JS. 70-120. Rare. 4F6.2 Upchurch S1/lb. JS. 70-120/150. Common. 4F6.3 Upchurch N2/1. JS. 70-120. Rare.

Unclassified.

4F0.1 Cooling S1/6. MC.ACX. 50-90. Unique. Class 4G Carinated bowls (native style).

This class continues from 2G, carinated beakers. The forms in 4G are too wide to be considered as beakers, but they are part of the same tradition.

4G1 With cordon above the waist (80-110/120).

4G1.1 Upchurch N2/lb. MC.UF. 80-120. Richborough 289 is 80-120. At Canterbury Burgate St, a 4G1 is with Flavian samian and coarse ware dated 100-130 (80, 43). Rare.

4G1.2 Upchurch N2/lb. RW 250. 80-110. A Romanised version of Thompson D2-1. Rare.

4G2 With gentle carination and a convex lower body.

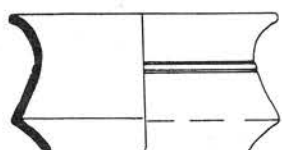
4G2.1 Upchurch N2/lbs white/grey. BM 56 7-1-5122. 50/70-100. Rare.

4G2.2 Upchurch N2/lb. BM 56 7-1-5121. 50/70-100. Rare.

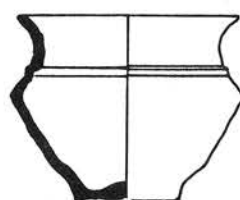
4G3 With high waist.

4G3.1 Upchurch S1/lb. JD. 50/70-100. Common.

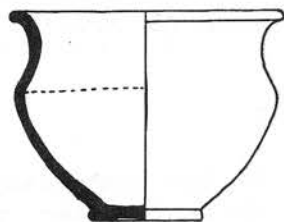
4G3.2 Upchurch S1/1. JS. 50/70-100. Analysed as UA 18 (Monaghan 1982b). Common.



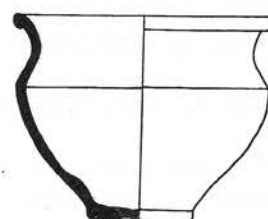
4G1.1



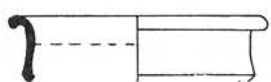
4G1.2



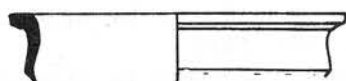
4G2.1



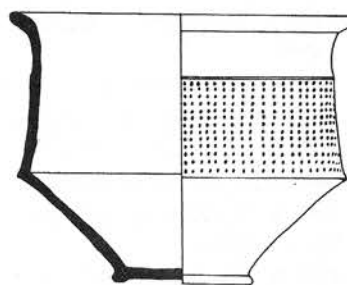
4G2.2



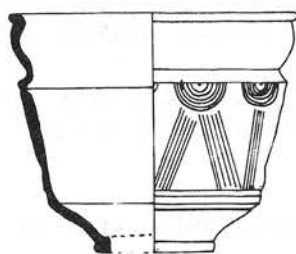
4G3.1



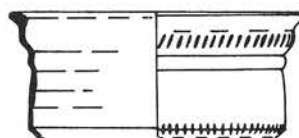
4G3.2



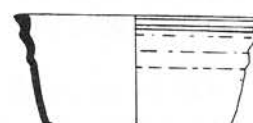
4G4.1



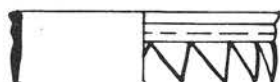
4H1.1



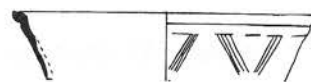
4H1.2



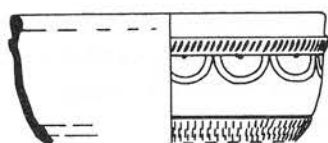
4H1.3



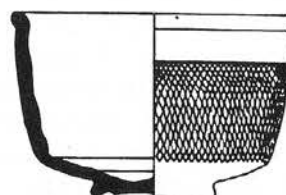
4H1.4



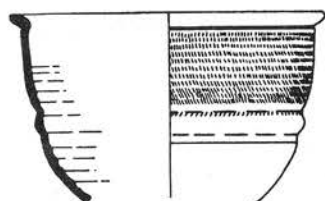
4H1.5



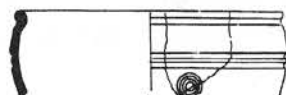
4H2.1



4H2.2



4H2.3



4H2.4

4G4 With low waist and nearly vertical upper walls.

4G4.1 Upchurch N2/lbs. RW 18. 70-130. Some discolouration of an otherwise shiny black vessel. Paralleled at Chalk circa AD 300 (8, 30) but this vessel is certainly residual. Rare.

Class 4H Carinated bowls (Continental style).

This class has no relationship with class 4G, but some examples approach beaker dimensions. The vessels are all derived either directly from samian prototypes or from native copies of the same. They are typical of the "London Ware" style (See chapter four).

4H1 Vessels loosely imitating Dr. 30 (70-130).

4H1.1 Upchurch N2/lb. BM 56 7-1 5132. 90-130. Marsh 1978 (183, 48.1). Rare.

4H1.2 Upchurch N1/lb. JD. 90-130. Marsh and Tyers (1976, 121-133) suggest origins in terra nigra and Dr. 30. Rare.

4H1.3 Upchurch N2/lb. JD. 80/90-130. One was found in a second century deposit in Rochester (Harrison 1972, 133, 12). Rare.

4H1.4 Upchurch N2/lb. HC. 70/90-130. Similar in style to Thompson B2-2 or B3-1. Rare.

4H1.5 Upchurch N2/lb. JD. 80/90-130. Rare.

4H2 Vessels loosely imitating Dr. 37 (70-130).

4H2.1 Upchurch N1/lb. JD. 70/90-130. Southwark IVE is dated 90-130. Marsh 1978, 175, 42 has a Trajanic date. Compares with Marsh and Tyers 1976, 236, 108-115. Parallel found with samian dated 70-100 (Tester 1961, 94). Rare.

4H2.2 Upchurch N2/lb. RW 959. 70/90-130. Dr. 37 has a life from AD 70 through to the third century. A parallel occurs dated 80-120 (Meates 1974, 17, 9). Rare.

4H2.3 Upchurch N1/lb. JD. 70/90-130. Rare.

4H2.4 Upchurch N1/lbs. JS. 70/90-130. Compare Marsh 1978, type 42. Rare. Class 4I Shallow bowls.

The height/width ratio of these vessels approaches that of dishes. Of simple form, the bowls have a constriction close to the rim. The class is not common and most examples are unique.

4I1 With everted rim (10-70).

4I1.1 Upchurch S3/lhb. RW 202. 10/40-70. Probably pre-invasion, related to Thompson D1-4. Richborough 73 is in mid-late first century deposits. The vessel is knife-trimmed and is distorted and cracked. Rare.

4I1.2 Upchurch S3/lh. RW 292. 10/40-70. Rare.

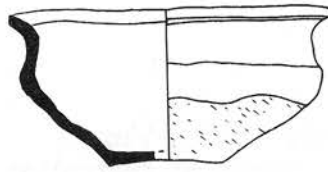
4I2 With inward-leaning neck.

4I2.1 4I2.1 Upchurch N4/lb. MB. 43-60. The vessel is in a Roman fabric, but has a belgic character. Rare.

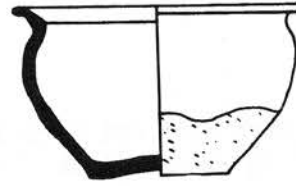
4I3 With distinct band below an out-turned rim (40-70).

4I3.1 Upchurch F2/1. JD. 50-70. Rare.

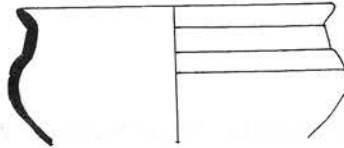
4I3.2 Upchurch S1/lb. JS. 50-70. Rare.



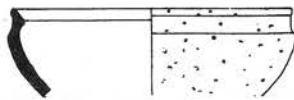
411.1



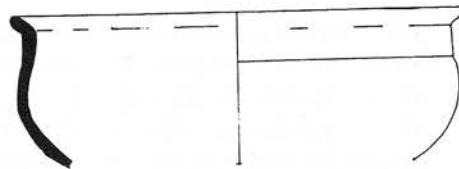
411.2



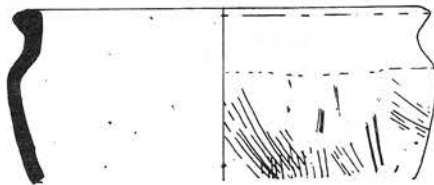
412.1



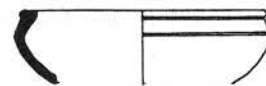
413.1



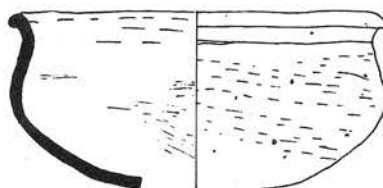
413.2



414.1



415.1



416.1

X

414 With distinct band below slightly everted rim.

414.1 Upchurch Fl/lh. JD. 10-40/50. Common at restricted locations.

415 With flattened bead rim.

415.1 Upchurch Sl/1. JD. 50-80. Rare.

416 With thickened rim.

416.1 Upchurch Fl/lh. JD. 10-40/50. Rare.

Class 4J Fine cordoned bowls.

The class is characterised by elegant, thin-walled and narrow based vessels decorated by cordons. These were probably formed by templates. The vessels have a heavy belgic influence. Thompson D2-4 was made from the early first century until the conquest. Thompson sees 4J as being a piece of belgic nostalgia (pers. com.).

4J1 Multiply cordoned with slightly everted rim.

4J1.1 Cliffe N2/4b. PC. 43/50-110/120. Rare.

4J1.2 Upchurch N1/lb. JD. 43/50-110/120. Rare.

4J1.3 Upchurch N2/lb. MB. 43/50-110/120. A similar vessel was dated as Trajanic-Hadrianic at Aldgate (Chapman and Johnson 1973, 29, 131). Another was with samian dated 40-50 (Jenkins 1950, 102). One was found in a Claudian pit at Richborough and in deposits up to 125 (273, 144, 51, 422).

4J1.4 Cliffe Sl/4. PC. 60-110/120. Rare.

4J1.5 Cliffe N1/4b. HC. 43/50-110/120. Richborough 51 is "early".

Swarling XI, 6 is post-conquest. Thompson B3-1 is mid-first century.

Rare. 4J1.6 Cliffe N2/4b. HC. 43/50-110/120. Rare. 4J1.7 Cliffe N1/4b. HC. 43/50-110/120. Rare.

4J2 Less highly decorated, with rolled rim. 4J2.1 Cliffe N2/4b. HC. 43/50-110/120. Rare.

4J3 With incised grooves instead of cordons.

4J3.1 Cliffe N2/4bs. 43/50-110/120. The vessel rim has been repaired with pitch. Unique.

4J4 High waisted vessel with small rim. 4J4.1 Upchurch N1/lb. MB. 43-70. Rare.

Unclassified.

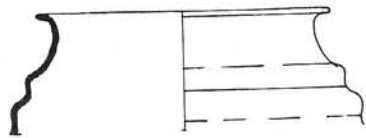
4J0.1 Upchurch Sl/lb. JD. 60-70/100. Rare. 4J0.2 Cliffe Sl/4b. PC. 60-70/100. Rare.

Class 4L Lid-seated bowls.

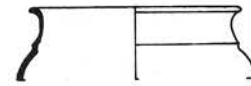
This class is not common in northern Kent.

4L1 Round-bodied with cordoned neck and upright rim.

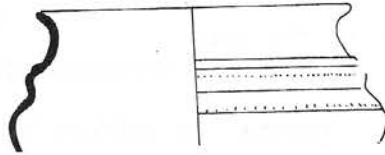
4L1.1 Cooling Sl/6b. MC.KD. 140/190-230/300. Occurs in mid-second century deposits at Springhead. One example known from the Chalk cellar c. AD 300 (Johnson 1972, 8.22). Rare.



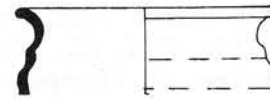
4J1.1



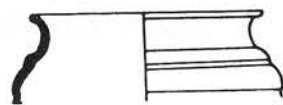
4J1.2



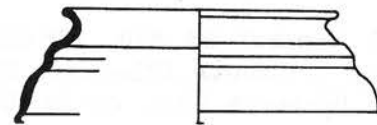
4J1.3



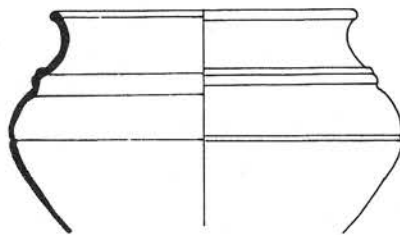
4J1.4



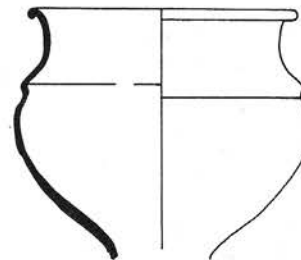
4J1.5



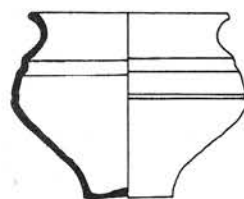
4J1.6



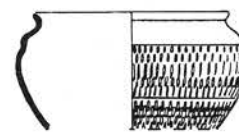
4J1.7



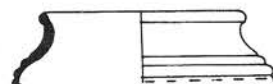
4J2.1



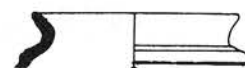
4J3.1



4J4.1



4J0.1



4J0.2

4L1.2 Cliffe S1/4b. HC. 140-240. Rare.

4L2 Round bodied with a groove on top of the rim.

4L2.1 Cliffe S3/4. HC. 50/70-90. Probably just post-conquest, close ties to belgic forms ie. Thompson D3-4. Rare.

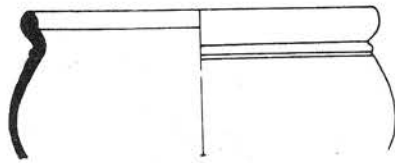
4L2.2 Cooling S3/6. MC.TQ. 50/70-90. Flavian to 90/120 at Greenhithe (Detsicas 1966, 159, 92). Rare.

**Unclassified bowls.**

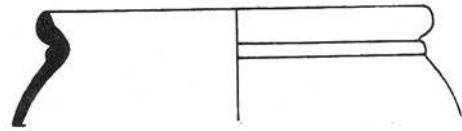
400.1 Shorne? RM 828. 175-350. Probably an import from Essex, Cam. 306. Unique (in Kent). Otherwise S1/5.

400.2 Upchurch F2/1. 43-70. Unique.

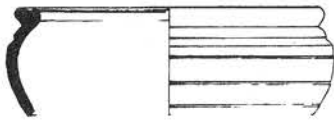




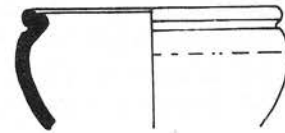
4L1.1



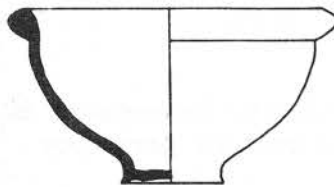
4L1.2



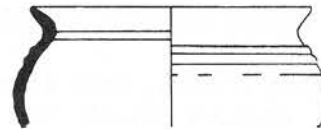
4L2.1



4L2.2



400.1



400.2